

October 2014 | Newsletter

Hey Team,

Here is your October Newsletter for the month:

We have also updated the October Schedule, it is now on the website.

www.scaquarium.org/divers

Dive News:

- **We have 3 new divers joining our Team**

- Chris Sadzewicz will be joining both Saturday & Sunday Teams on a weekly basis
- Rob Lee will also be joining Saturday & Sunday Teams on a weekly basis
- Rick Pepler will be joining the Monday Teams every week

- We have a couple event dives coming up. Please get in touch with Arnold if you are interested in taking part.

Pumpkin Carving

Looking for 2 extra divers each day. We are doing this a little different this year. Instead of a competition we are going to work on one large 100+ Lb. pumpkin. Dive is at 11:00 AM show, but we need to start early getting the pumpkin ready.

Oct 24 (Friday) 8:00 AM-12:00 PM

Oct 31 (Friday) 8:00 AM-12:00 PM

Fish or Treat – Costume Dives

Looking for a full crew for this. Depending on response we will do either 1 or two dives.

Oct 28 (Tuesday) 5:30-7:00 PM

GOT News:

- **Water Temp** is **bouncing** around 75-79F. Might suggest packing your thicker suits. Everyone is saying it's chilly.

Topside **Standby** Diver VS Topside **Tender**

There has been a little confusion between the definition of these two terms. We understand and appreciate everyone working through these changes with us.

There will always be a Standby Diver during all GOT dives.
The standby diver is ready and able to respond in an emergency.

A Tender is a position that monitors a surface supply air source/communication umbilical or possibly just a communications cable.

A **Tender** position is needed in the event of Solo GOT dive along with a **Standby** Diver.

The DPIC needs to be alerted and will approve any Solo GOT Dives before it takes place; *even if it is an animal emergency.*

In the event of a solo GOT dive, the diver must be on full face mask communications, with the Comm Box **Turned On** with **Audible Volume**.

When in doubt, always have at least a Team of 3 logged for the dive, with at least one **Standby** topside for GOT dives.

Examples:

1. Diver
Safety
Standby
2. Diver
Standby
Tender

Please ask if there are any questions

Foam Fractionator Project:

- Our Foam Fractionators are now shut off.
- Below is a picture of a Before and After. We have now removed the 4 towers completely from the room.
- Next steps being done are prepping the room for waterproofing.
- Everything is still on track so hopefully only 4 ½ week to go!!!



- Vacuum Cart

We have the new Vacuum Cart up and running with attachments.

All Cleaning dives are now solely Windows and Vacuum until further notice.

Please check in with Dive Ops before Turning ON the Vacuum Cart in the morning.

Sometimes we will have to wait for Water Quality to finish maintenance before we can Vacuum with the cart, or we will use the old floor drain vacuum method.

Sometimes the vacuum cart will be running permanently, sometime not. If we have not yet briefed you on how to use the cart, please come see us first before you use it.

Do not troubleshoot a problem yourself, call Dive Ops or Water Quality.

Dive Gear:

- Filling Pony Bottles

Bottom line is most of us are filling Pony Bottles too fast.

To be safer, I have found that we need a slightly altered procedure when filling Pony Bottles.

When filling Pony Bottles, you will have to only nudge the Fill Knob slightly ON and that will be enough.

Dive Ops does regulate the fill rate on the Blast Chamber, however that is only regulated from the Bank bottles.

Between the Compressor Room & the Dive Hallway is a long trailing fill whip leading to the blast chamber. The residual 3000psi of air in that line is not regulated on a fill rate.

As such, when you turn the Fill Knobs full on, there's a 2 second period, where you are exceeding the 300-600psi/minute fill rate.

We don't feel this poses a huge risk when filling the bigger bottles, but when you're filling an 2 empty Bony Bottles in 2-3 seconds flat, that is cause for worry in our mind.

It should take at least **1 minute** to top off any sized tank **from 2500psi**, and **5-10minutes** for a **completely empty tank**.

Feeding:

The reduced feeding has been very helpful. We really feel that is helping the GOT look better than expected during this renovation process.

A few things that will help make it even better.

-Please follow the food prep instructions as closely as possible.

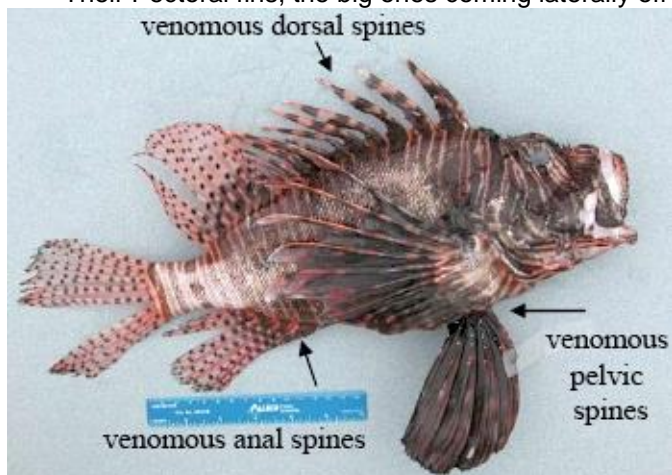
-Please do not feed peas. They are not being consumed and are the majority of what some teams are vacuuming.

-Slowly broadcast, especially smelt. With the surface current in the tank, "floaty" food (smelt) is going into the drain before being eaten. That is a problem. Just throw in a handful at a time, make sure it is eaten, then repeat.

Fun Facts:

- Lionfish have 18 Venomous Spines

- 13 Dorsal Spine,
- 3 Anal Spines, starting at the front edge of the anal fin and counting back
- 2 Pelvic Spines, one on each pelvic fin
- Their Pectoral fins, the big ones coming laterally off their sides, are not Venomous.



Cheers,

- RY

Ryan Yuen

Assistant Dive Safety Officer

South Carolina Aquarium

100 Aquarium Wharf
Charleston, SC 29401

Direct Line: (843) 579-8503

ryuen@scaquarium.org

www.scaquarium.org