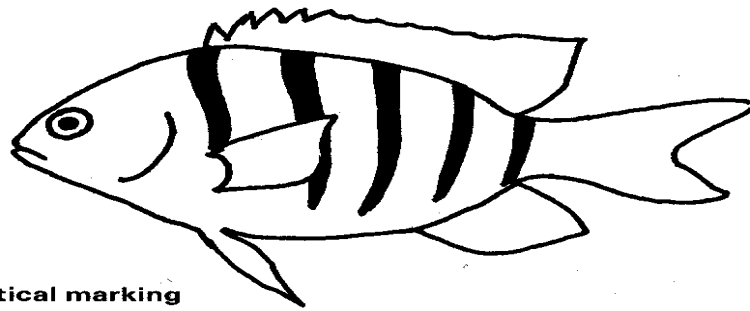


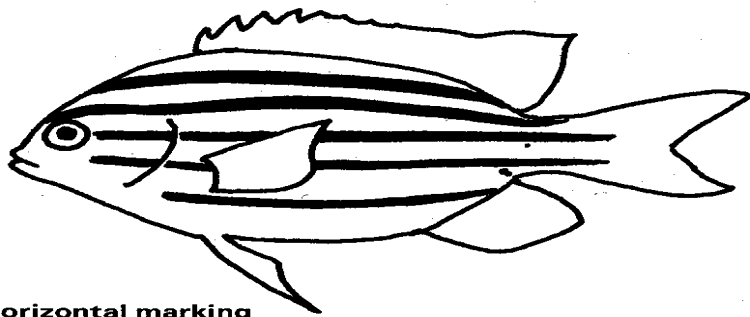


Fish Identification

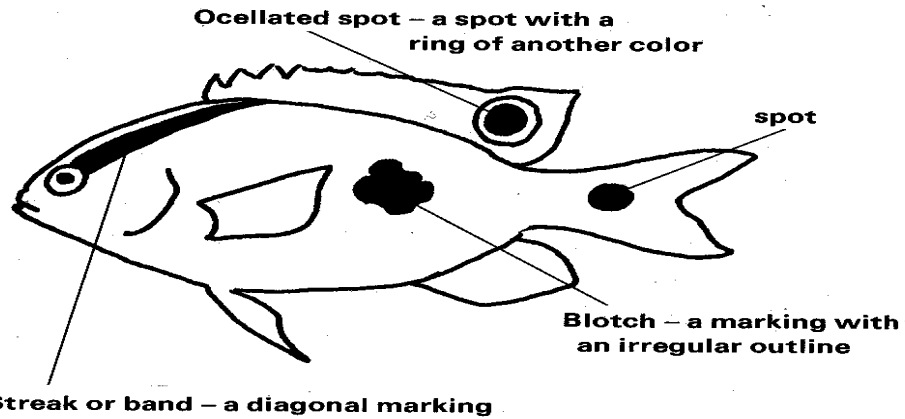
THE MARKINGS ON A FISH



Bar – any vertical marking



Stripe – any horizontal marking



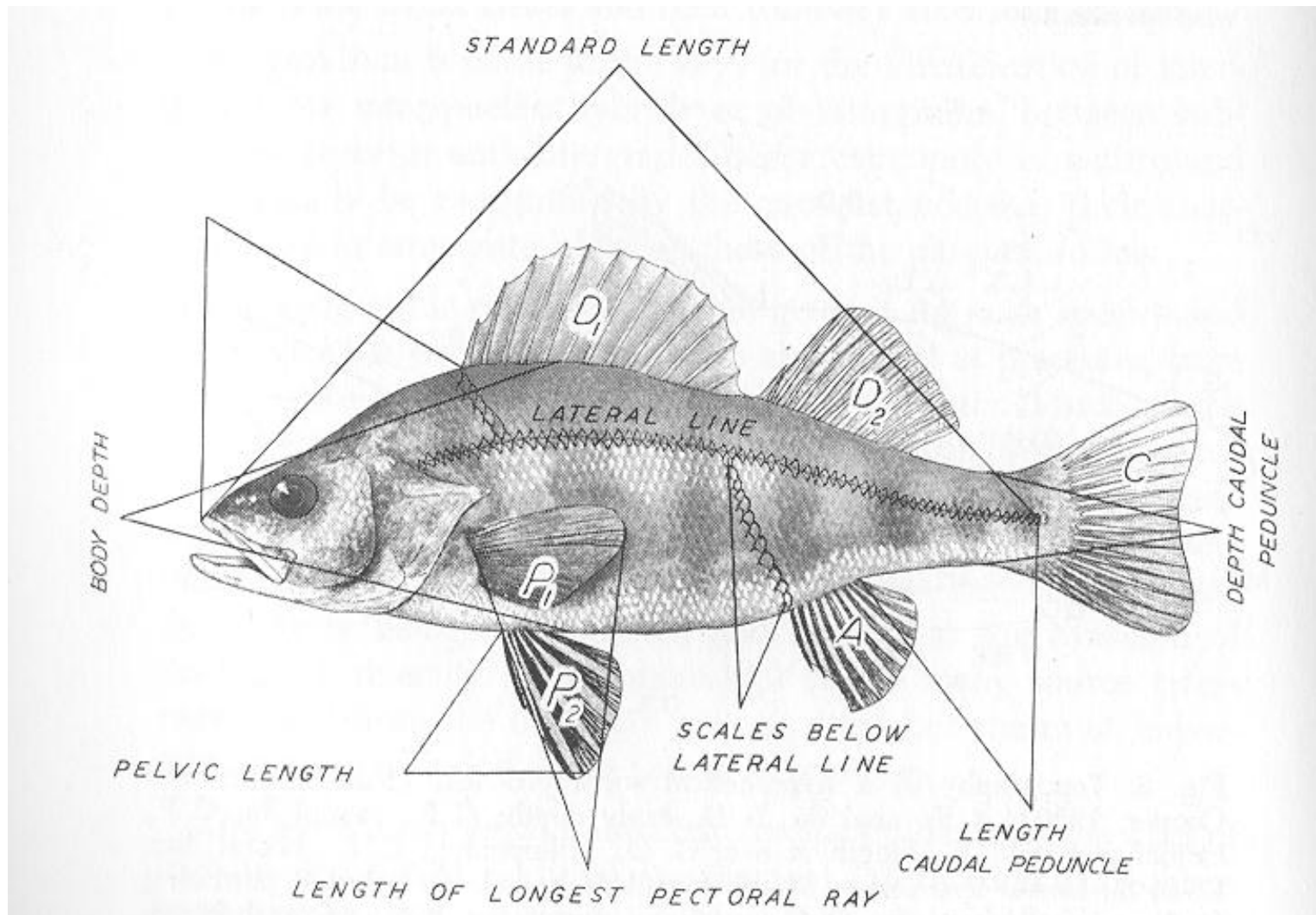
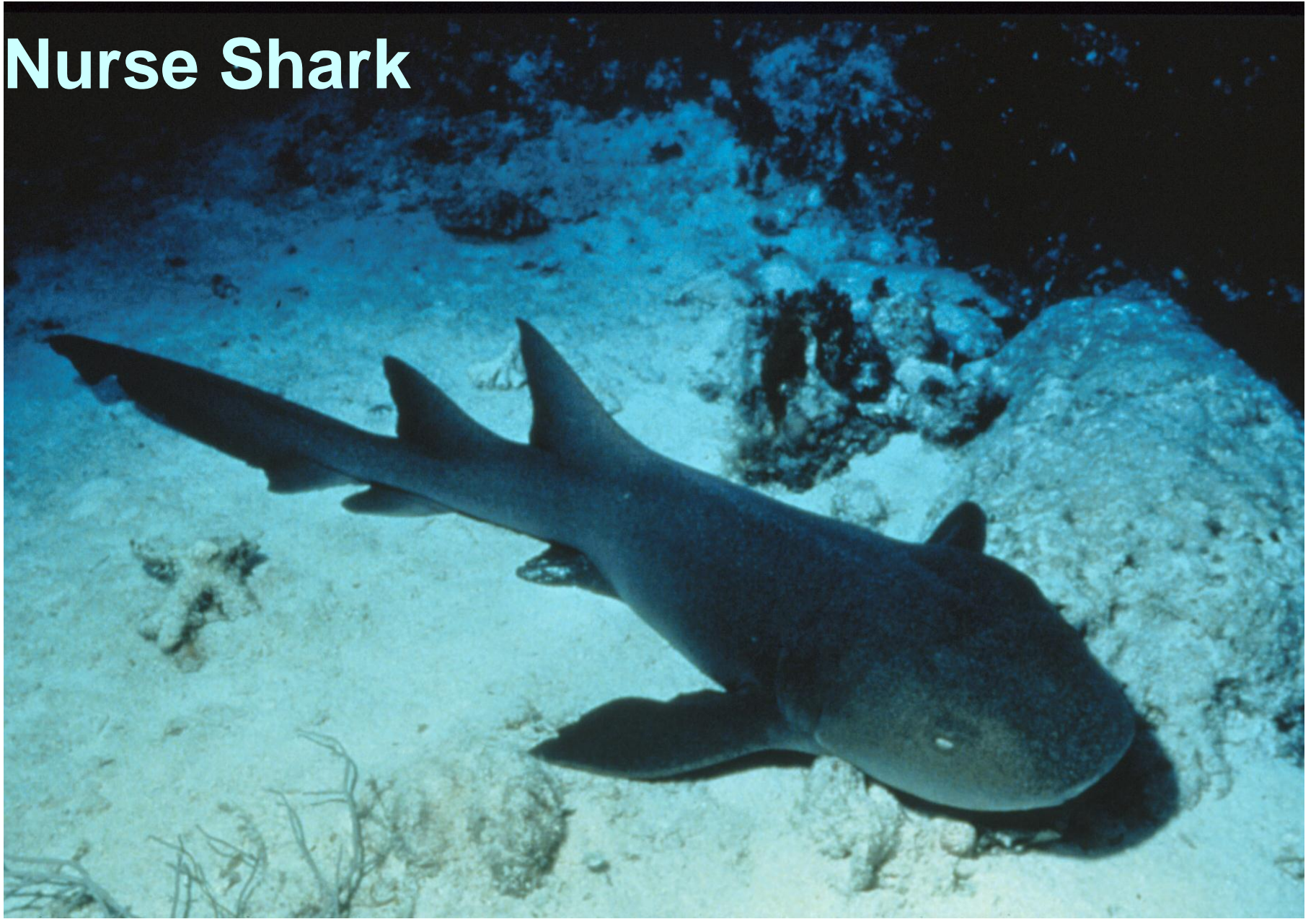
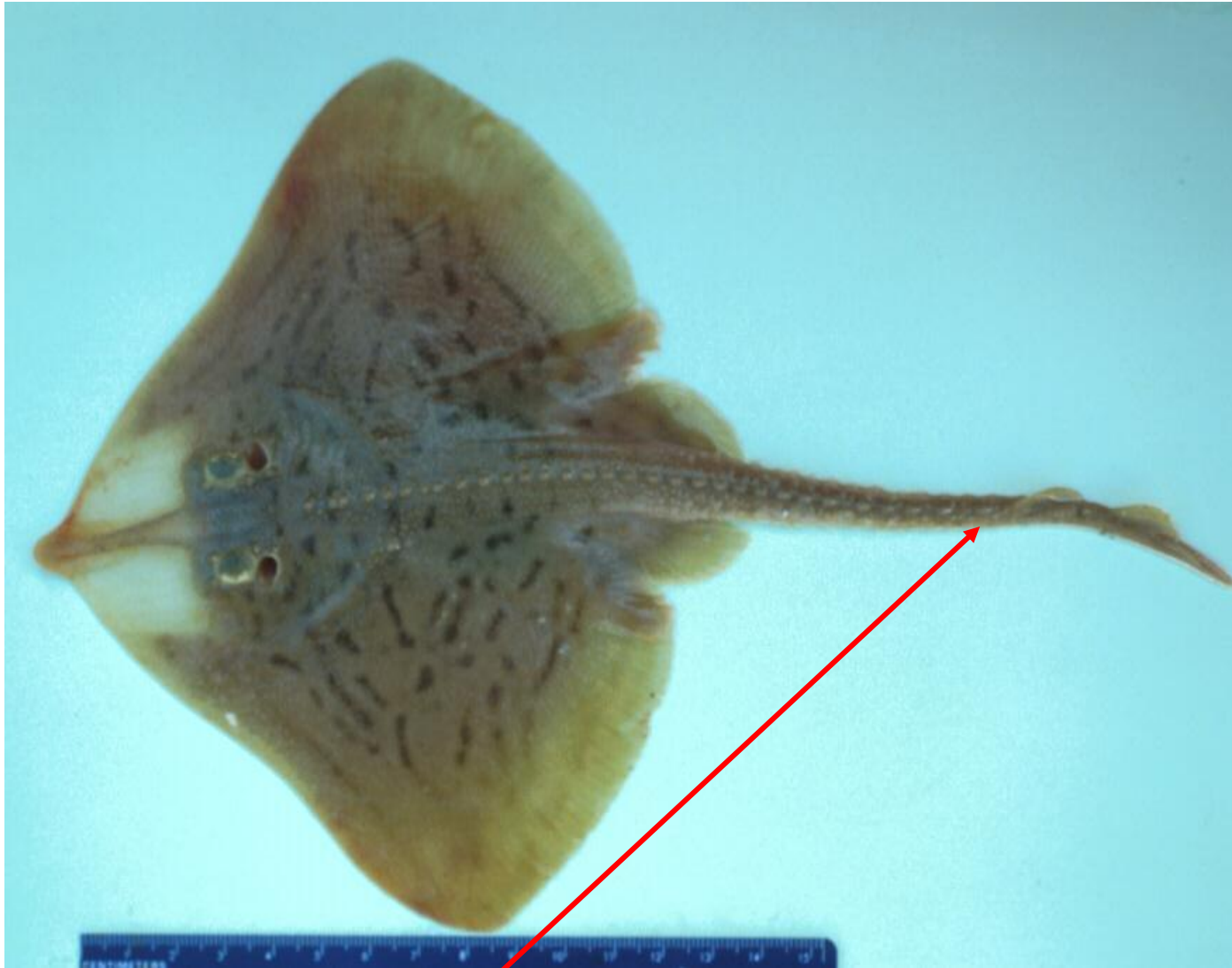


Fig. 4. Topography of a spiny-rayed fish (yellow perch, *Perca flavescens*), showing how certain measurements are made and locating structures and regions used in identification.

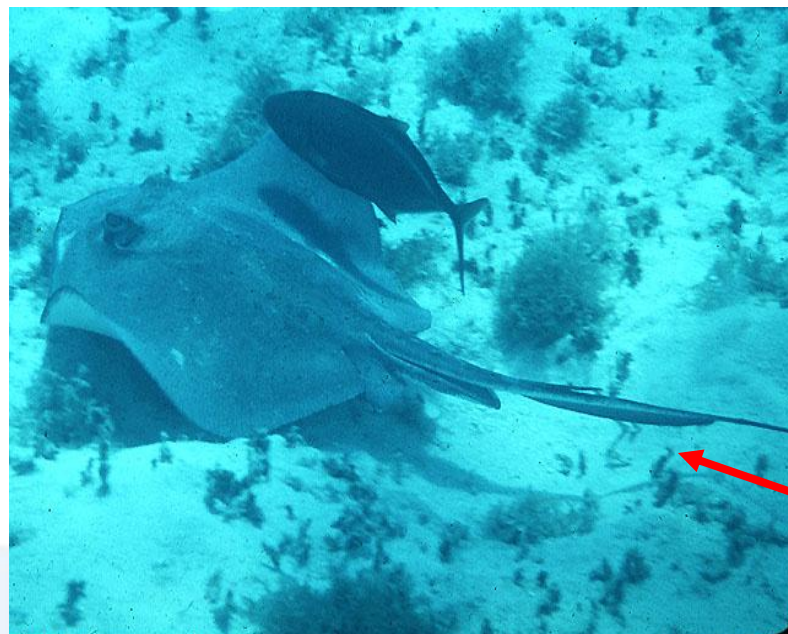
Nurse Shark



Clearnose Skate



Southern Stingray



Rays



Atlantic Stingray

Reticulate Moray



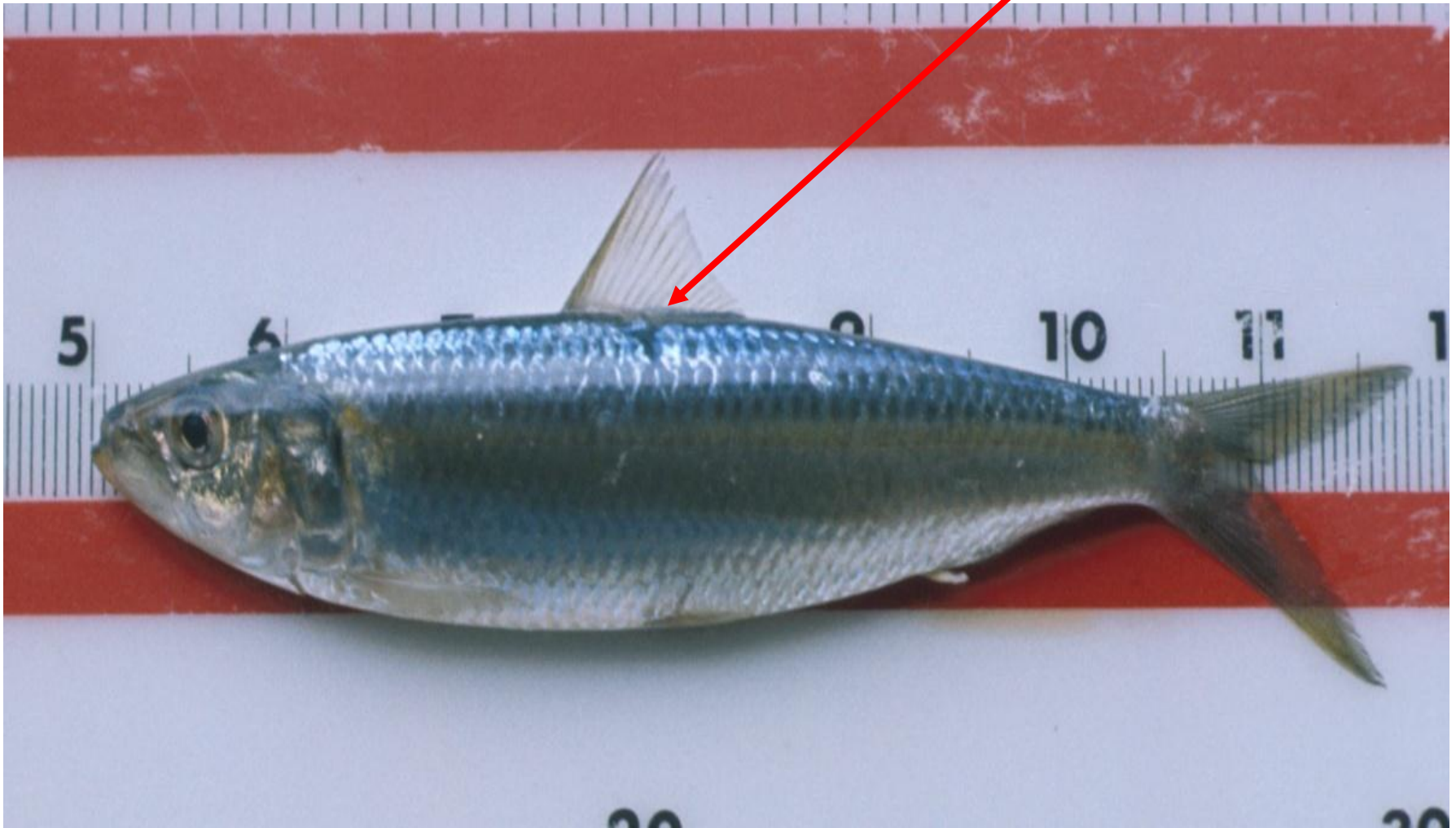
Honeycomb Moray



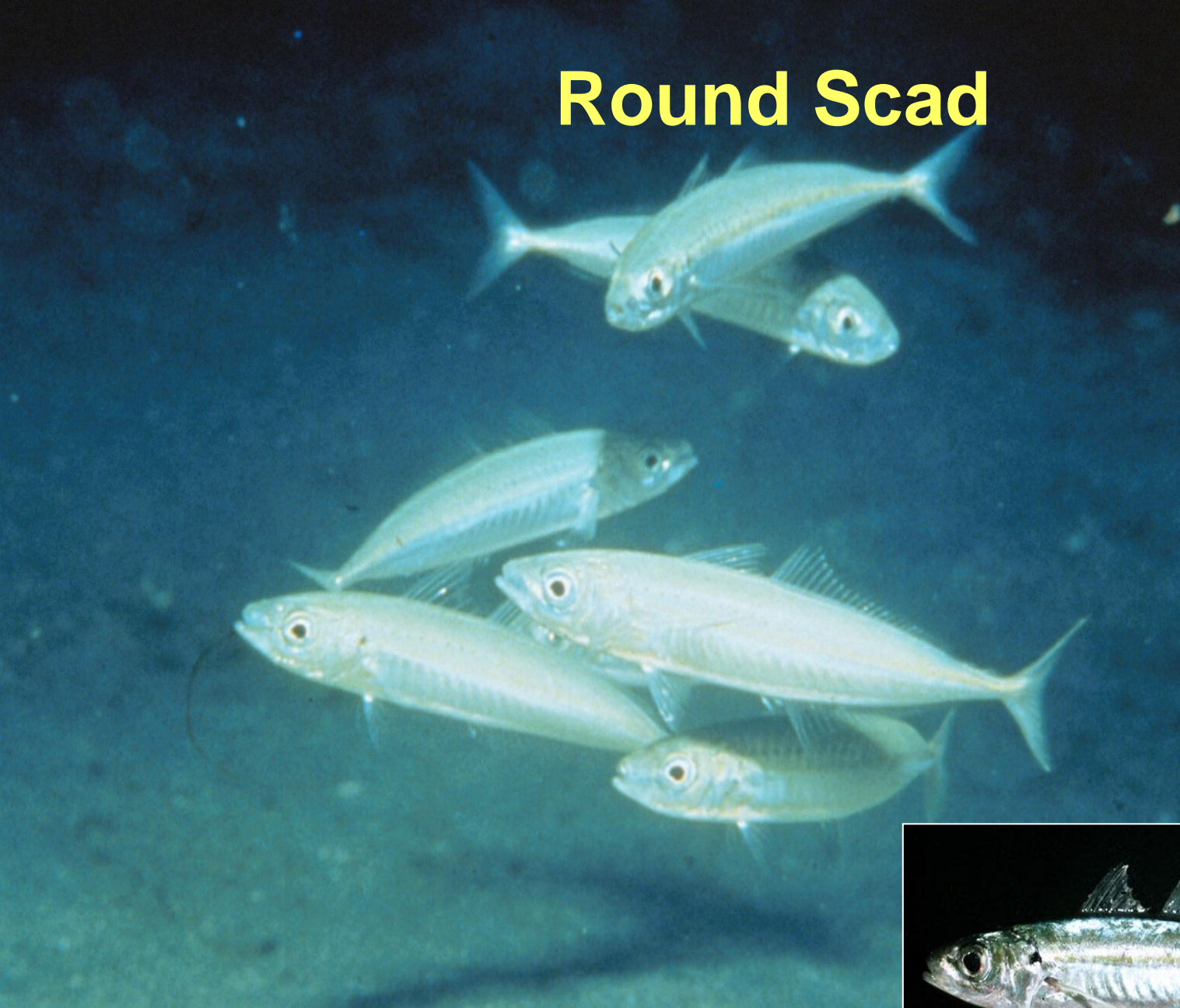


Anchovies

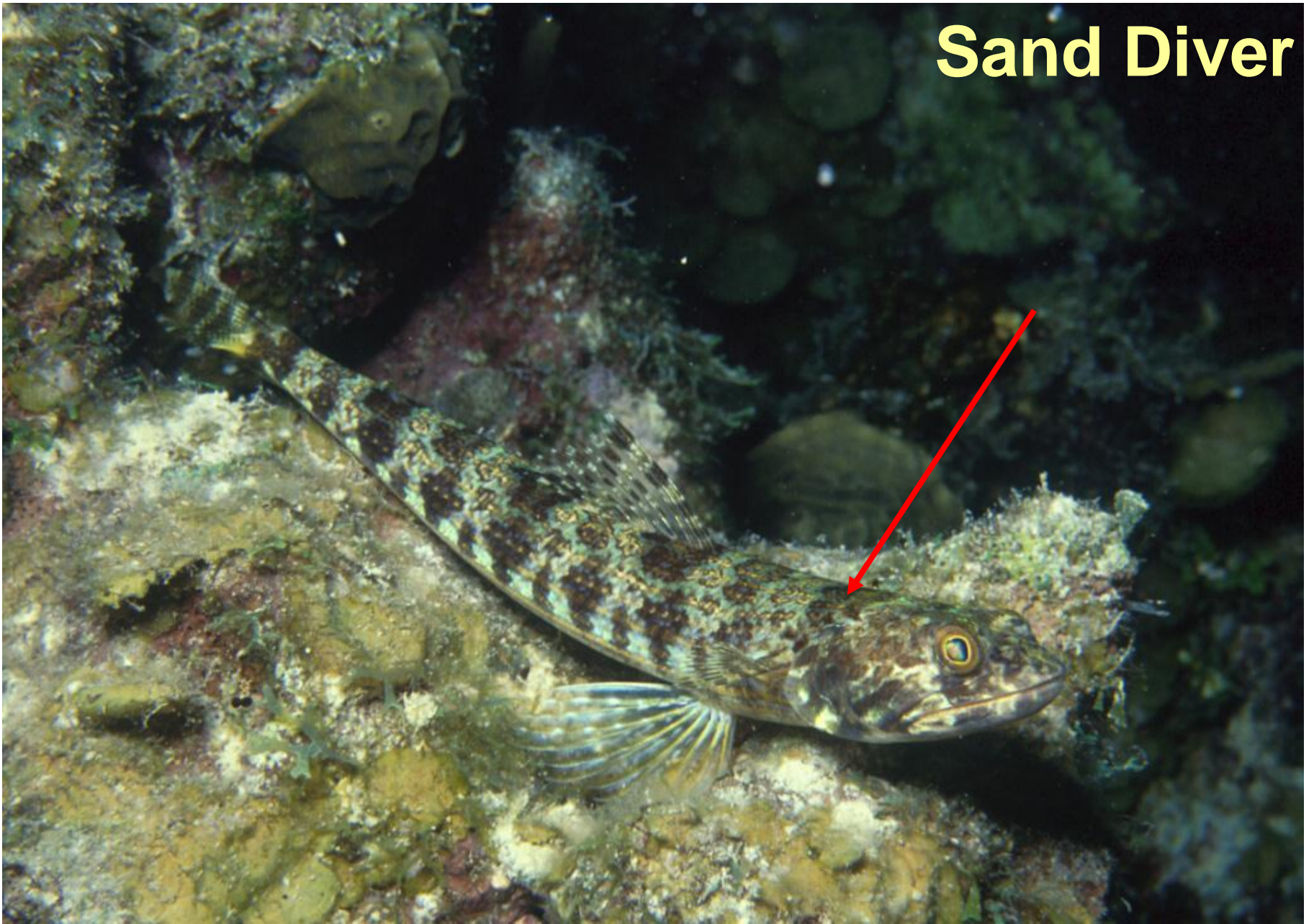
Spanish Sardine



Round Scad



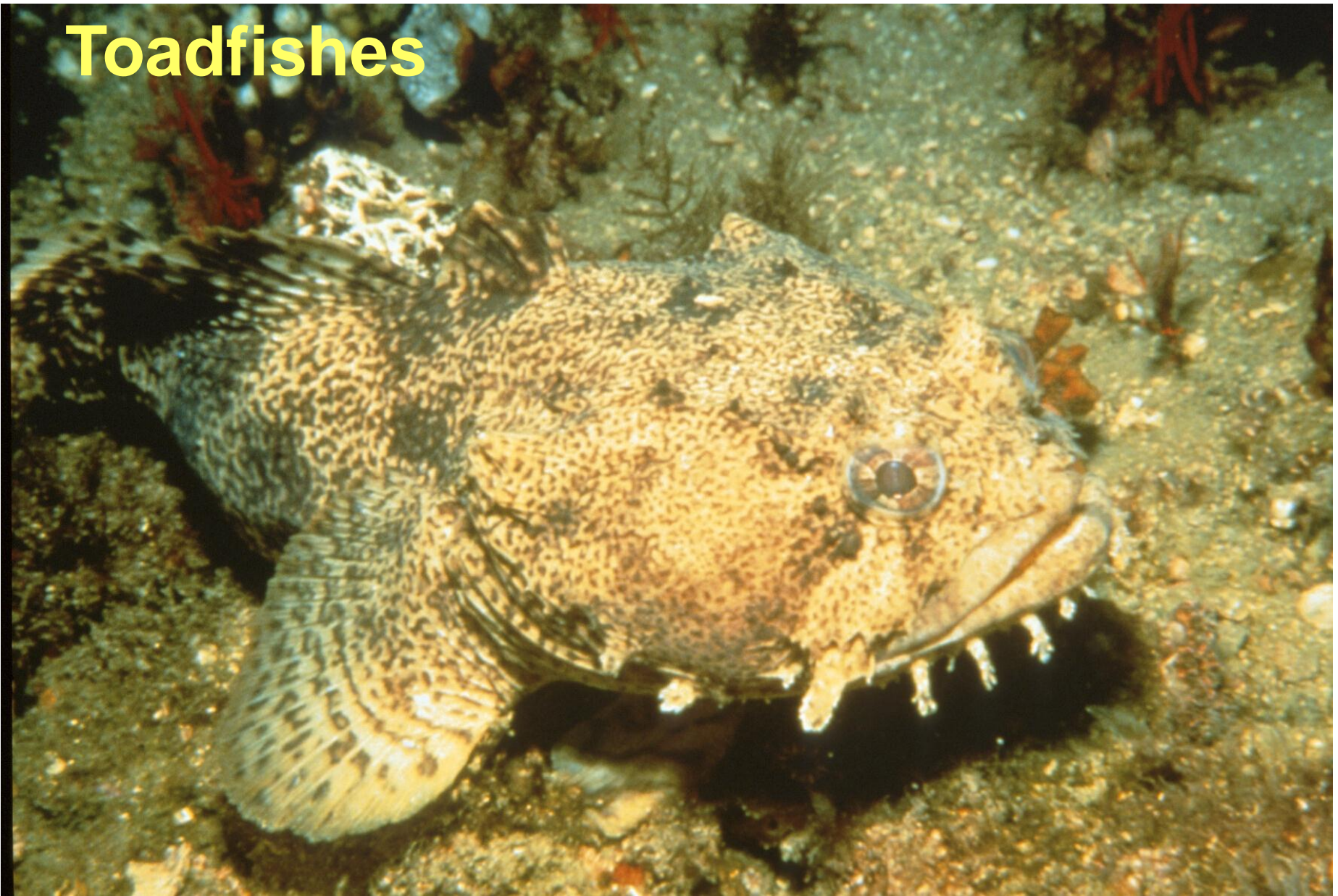
Sand Diver



Inshore Lizardfish



Toadfishes



Scorpionfish





Lionfish



Squirrelfish

H. ascensionis



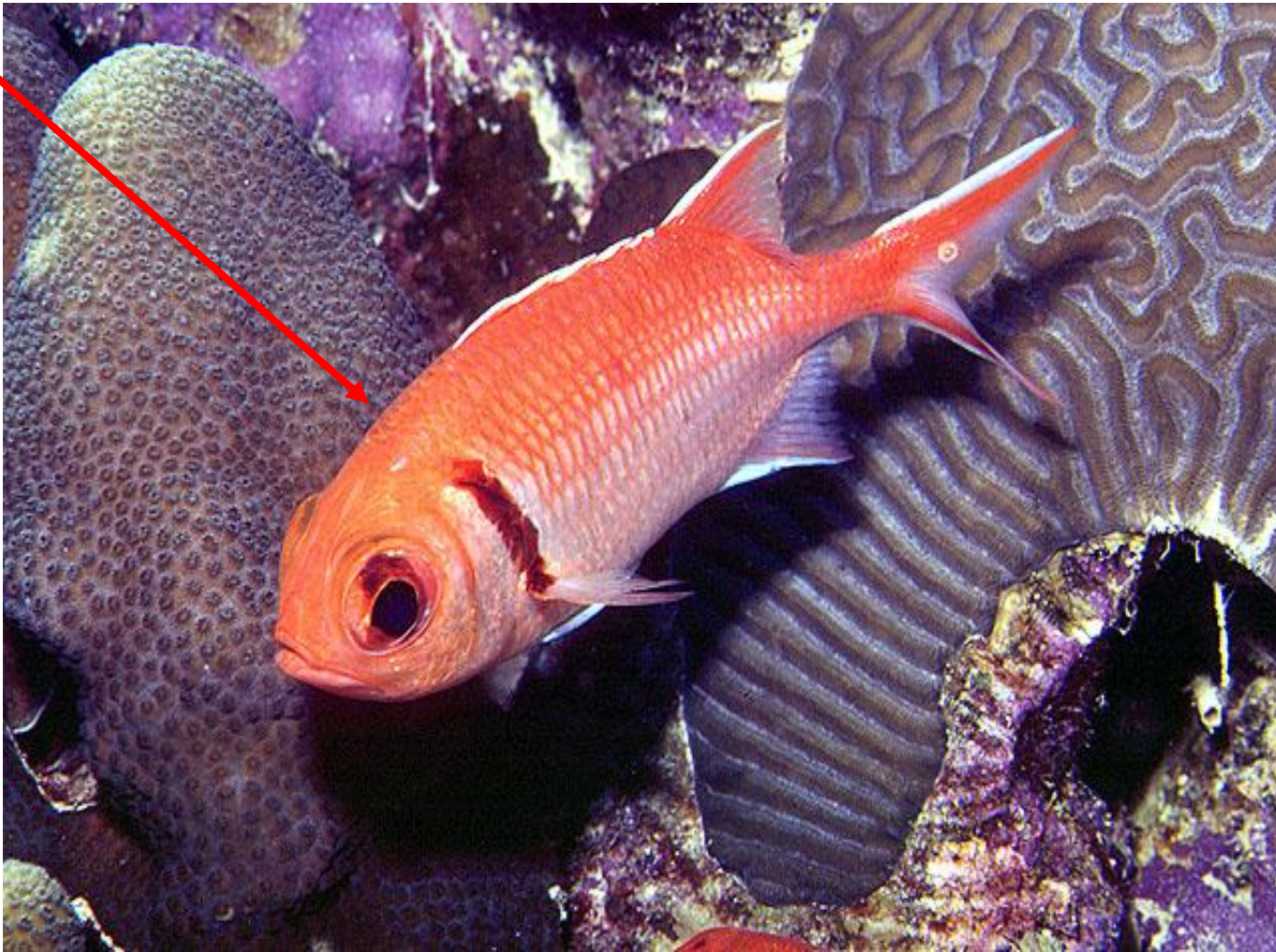


Longspine Squirrelfish

Holocentrus rufus

South Carolina Aquarium

Blackbar Soldierfish



Bigeye



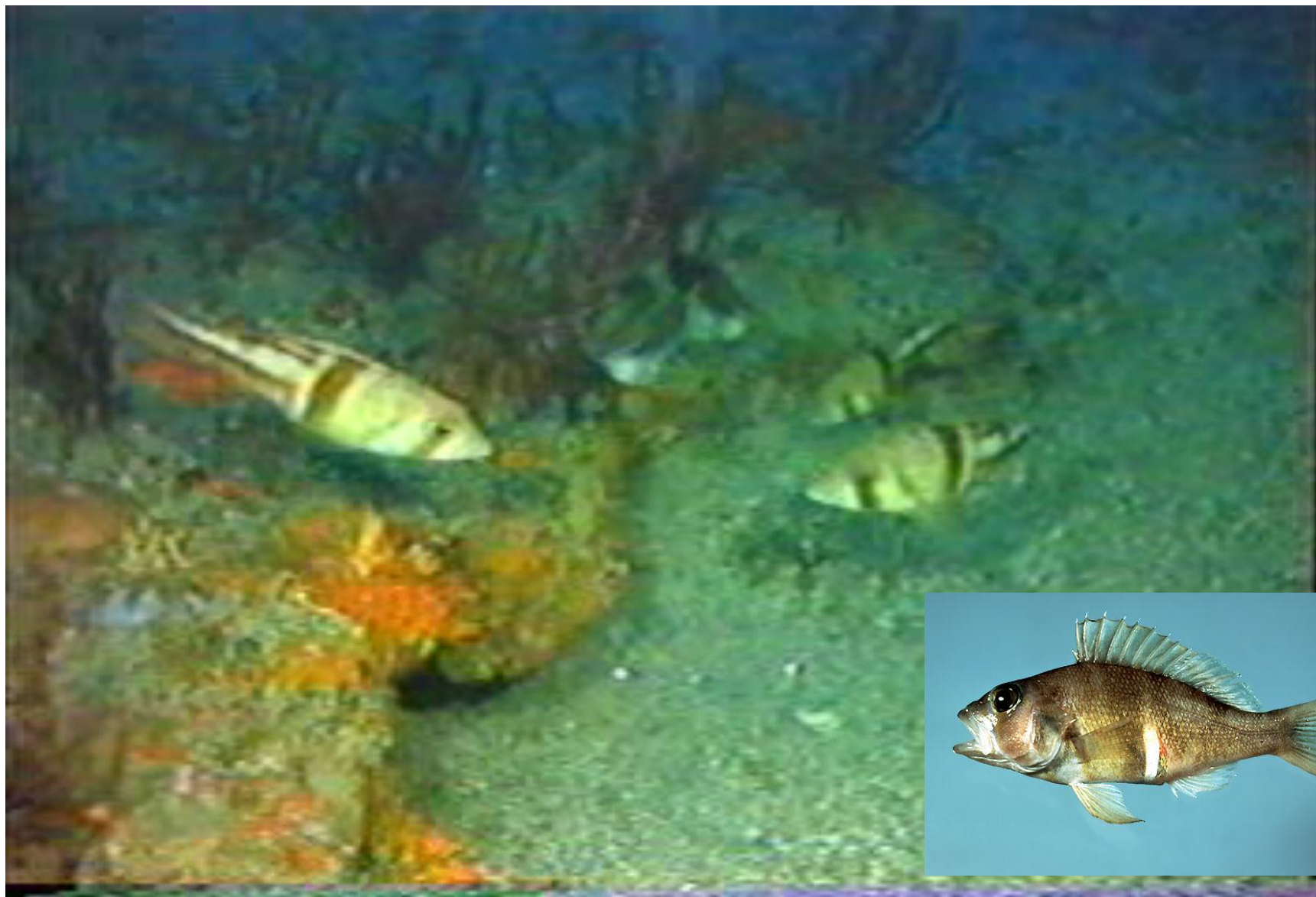
Twospot Cardinalfish



Belted Sandfish



Tattler



Black Sea Bass



Bank Sea Bass

