



OW FISH ID STUDY SESSION – TOP 100 BY COMMON ABUNDANCE



REVIEW GOT



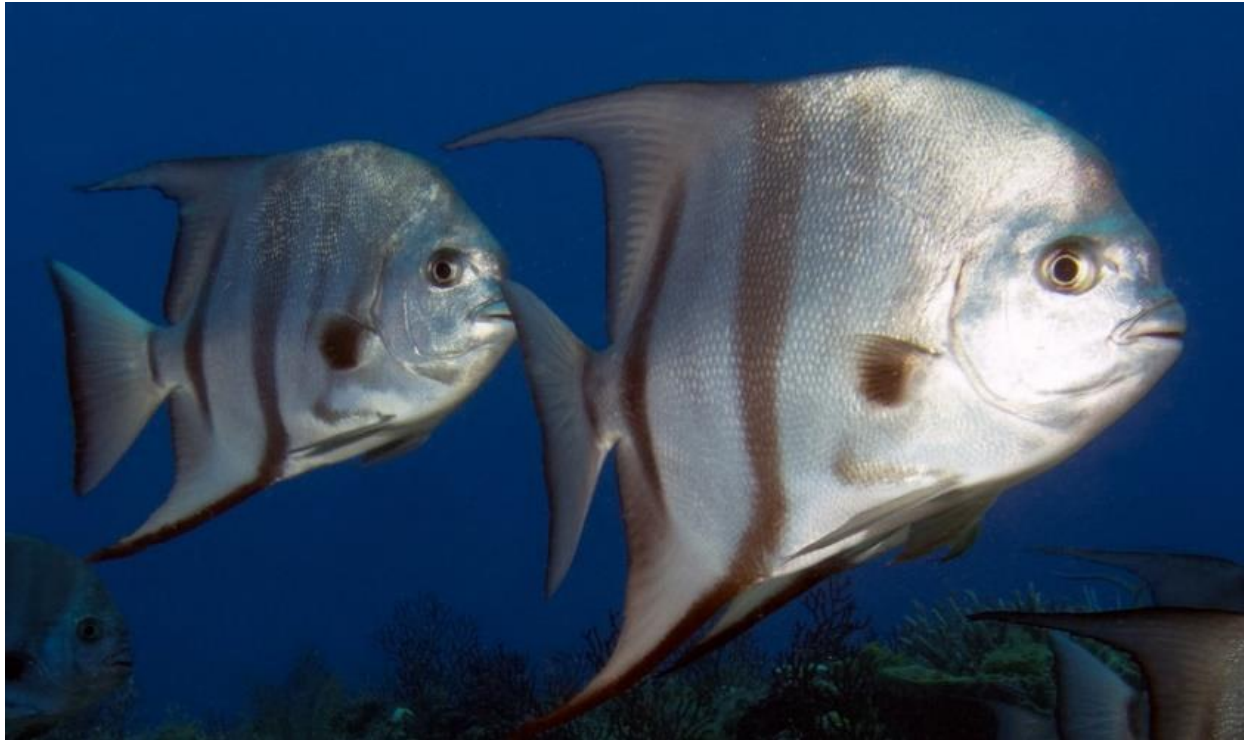
Black Seabass

Size: 18in



Sergeant Major

Size: 6in



Atlantic Spadefish

Size: 1½ft



Tomtate

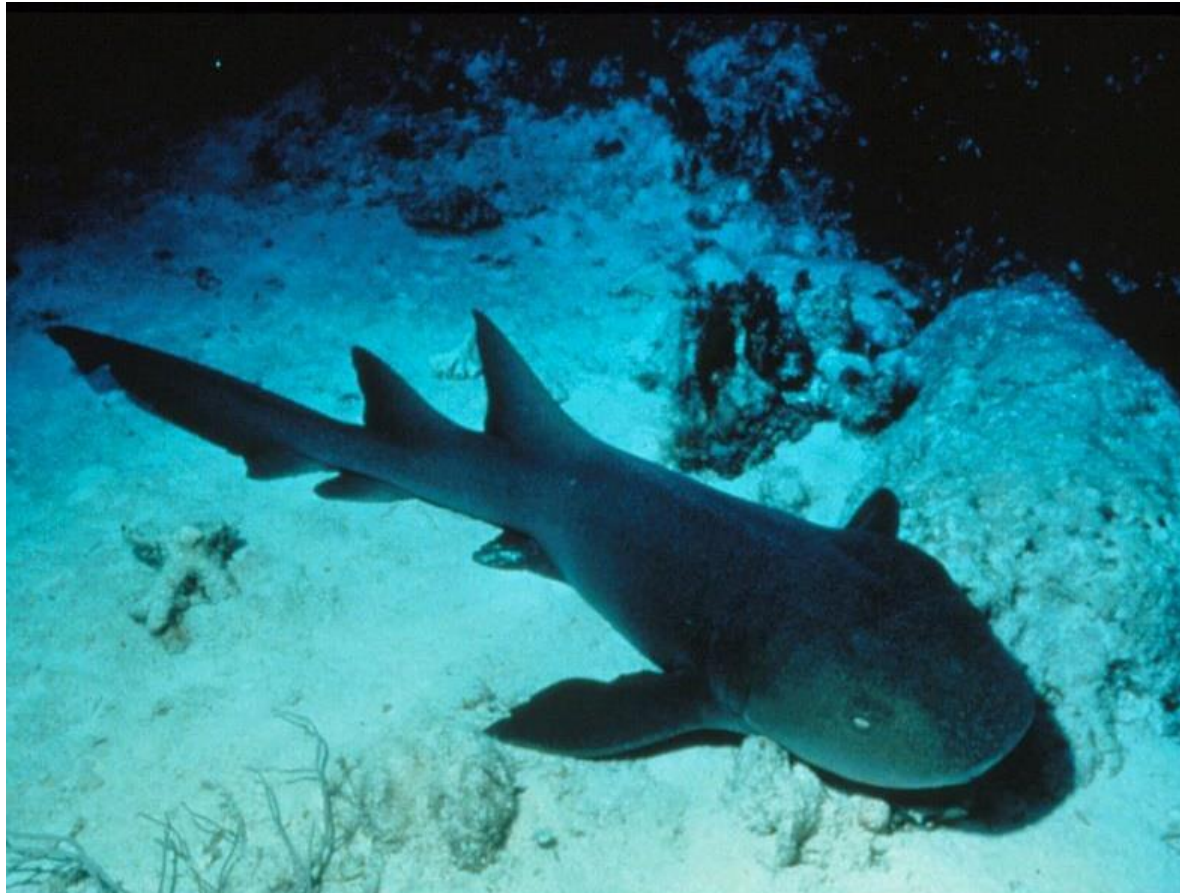
Size: 8in

- Yellow-bronze stripe running through eye to tail
 - Pale fins
 - Black spot at base of tail



Grey Triggerfish

Size: 9in



Nurse Shark

Size: 9ft



Sheepshead

Size: 1½ft

- Dark semi-diagonal bars on body



Scamp

Size: 1½ft

- Broom-edged tail
- “Kiss” marks on body



Gag Grouper

Size: 2ft

- Flat/Shovel edged tail



Greater Amberjack

Size: 4ft

- Diagonal eye band
- Long, slender cigar shaped

Alamco

Size: 2ft

- Diagonal eye band
- Shorter, stout shaped
- Dorsal fin trailing edge elongated



SESSION #1
WK 7/01



Red Lionfish

Size: 18½in



Red Snapper

Size: 2ft

- Red iris
- Pointed anal fin

Gray Snapper

Size: 18in

- Occasionally dark band across eye to lip
- Color Pale to dark grey



Blue Angelfish

Size: 14in

- Bordered yellow edge on pec & caudal fin
- Body color variation Blue – yellow



Townsend Angelfish (hybrid)

Size: 18in

- Blue crown w/o jewels
- Half to bordered yellow caudal
- Shares traits of Blue/Queen



Queen Angelfish

Size: 18in

- Blue Crown w/ speckled “jewels”
- Full yellow caudal



Blue Angelfish (juvenile)

- Straight white stripes



Queen Angelfish (juvenile)

- Curved-edges white stripes



Mackerel Scad

Size: 10in

- Black dot near gillplate



Round Scad

Size: 8in

- Black dot near gill plate
 - > w/ trailing curving dots



Bigeyed Scad

Size: 12in

- Eye larger than snout length



SESSION #2
WK 7/14



Atlantic Guitarfish

Size: 2ft



Slippery Dick

Size: 7in

- Small green/yellow spot above pec fin
 - Dark-black midbody stripe
- *3 phases in life – multiple colors shifts depending on life phase*
 - > *White -> brown -> green*



Cocoa Damsel

Size: 4in

- Black dot on caudal
 - > “There’s a *coconut on the tail*”



Beaugregory

Size: 3in

- Curved-edges white stripes



Bicolor Damselfish

Size: 3½in



Cubbyu

Size: 8in

- Shorter dorsal hat
- Brown, drab coloration



Highhat

Size: 8in

- Taller dorsal hat
- Black and white stripped body
 - > Uncommon color variation of brown light brown stripping
 - > Look for uneven stripping coloration on brown



Cubbyu (juvenile)

Size: 2in

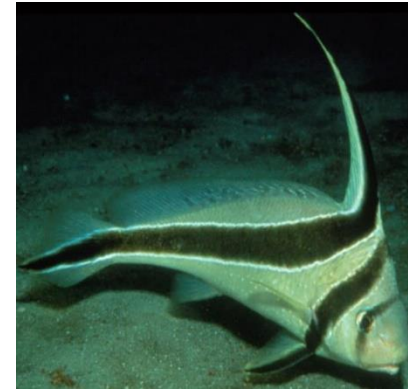
- “Oval” marking on nose



Highhat (juvenile)

Size: 2in

- Cross/stripe across eyes



Jackknife (w/ juvenile)

Size: 9in

- Juvenile color white or yellow
- Vertical black bar on nose
 - > Adult loses vertical bar





SESSION #3
WK 7/28



Red Grouper

Size: 2ft

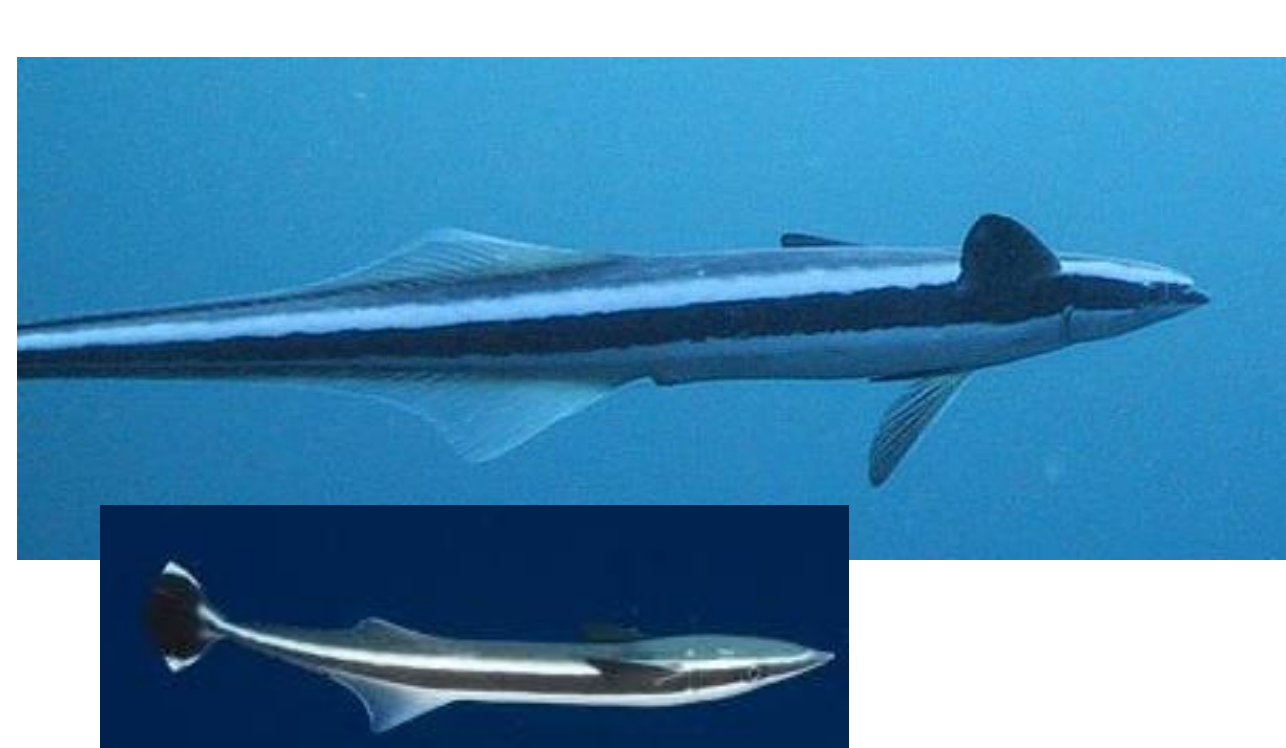
- Foredorsal fin has smooth edge



Cobia

Size: 4ft

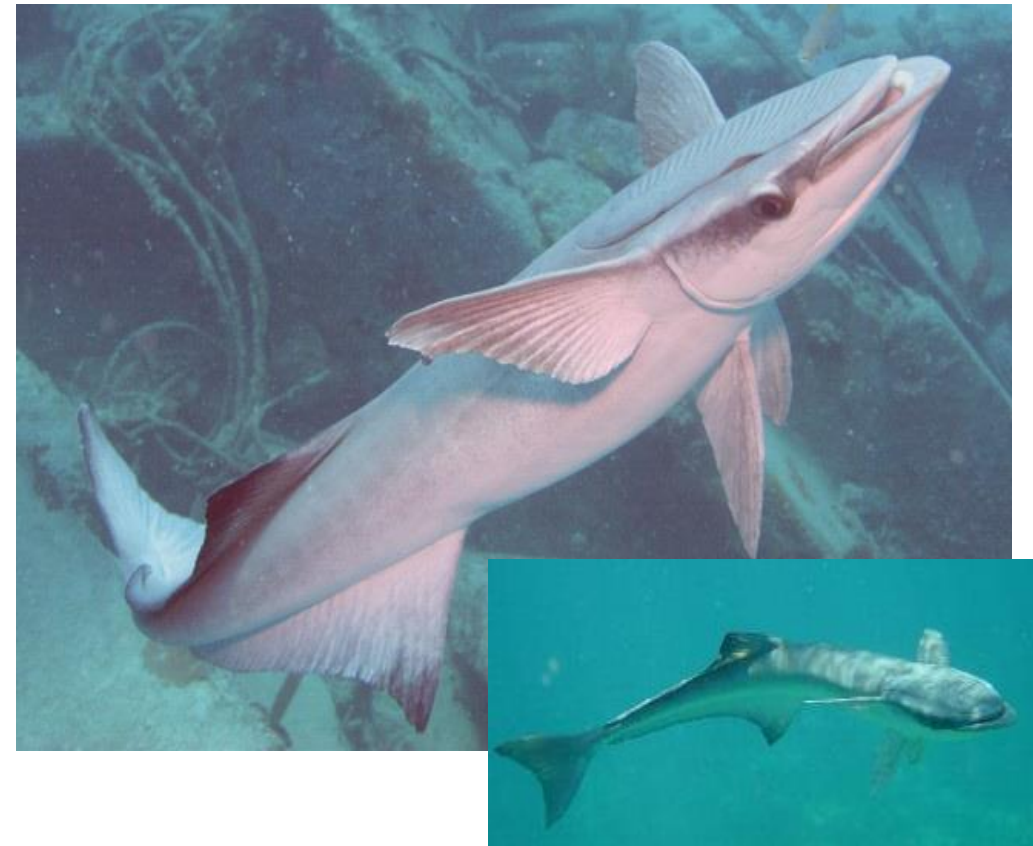
- Torpedo body w/ flattened forebody
 - Silver to brown coloration
- Sometimes black and white stripes



Shark Sucker

Size: 18in

- Flat top forehead
- White & black striping
- White border on darkened tail



Remora

Size: 15in

- Flat top forehead
- Uniform coloration throughout



Carolina Hake

Size: 14in

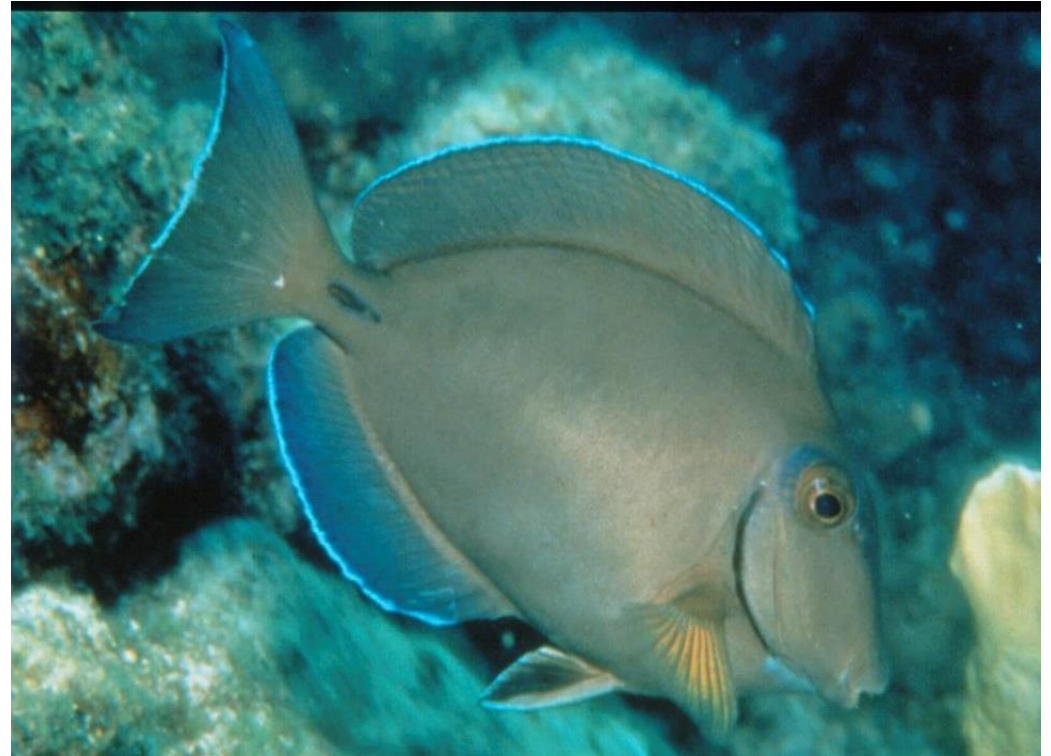
- Scatter white splotches on body
- Often only see face from front
 - > Notice single barbel “goatee”



Doctorfish

Size: 15in

- Vertical bar colorations on body
 - > *“doctor behind bars”*
- Dark leading edge of pectoral



Ocean Surgeonfish

Size: 15in

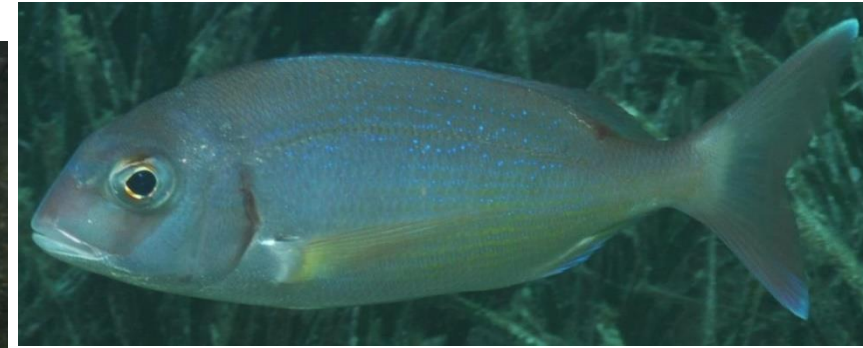
- Yellow-tint to translucent pectoral fin



Atlantic Blue Tang

Size: 15in

- Blue body
- Yellow tang on caudal



Porgy Sp.

Sheepshead Porgy

Size: 14in

- Black spot at upper base of pec fin
- Jaw overbite
- Occasionally faint dark body bars

Scup

Size: 12in

- Dark mid-body bar (sometimes)
- Thin blue stripes along dorsal
- First dorsal spine short, followed by several longer spines

Red Porgy

Size: 2½ft

- Pinkish tail w/ darker reddish margin
- Color reddish-silver



SESSION #4
WK 8/11



Vermillion Snapper

Size: 2ft

- Color red-salmon
- Protruding lower jaw
- Shallow forked tail



White Grunt

Size: 14in

- Stripes only on head



Bandtail Puffer

Size: 7in

- 2x dark bands on tail
- *Row of dark blotches from mouth to tail on lower body*



Reticulate Moray

Size: 18in

- Pale – Yellowish spots covering body
- Dark spot at gill opening



Spotted Moray

Size: 3ft

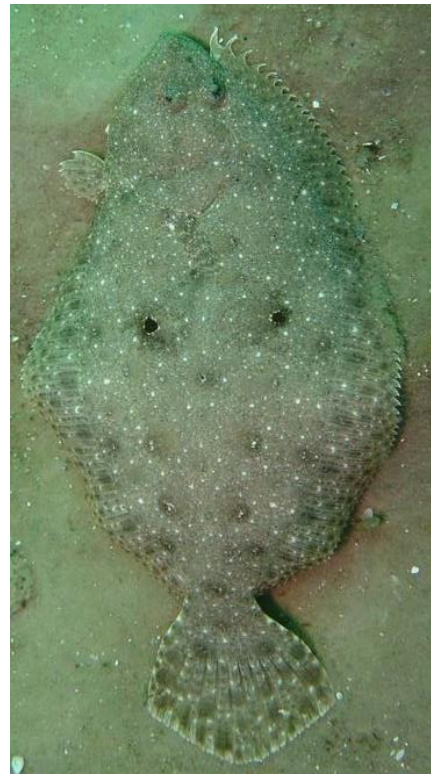
- Dark speckling & blotches covering body
 - > *“think eel with measles”*



Gulf Flounder

Size: 10in

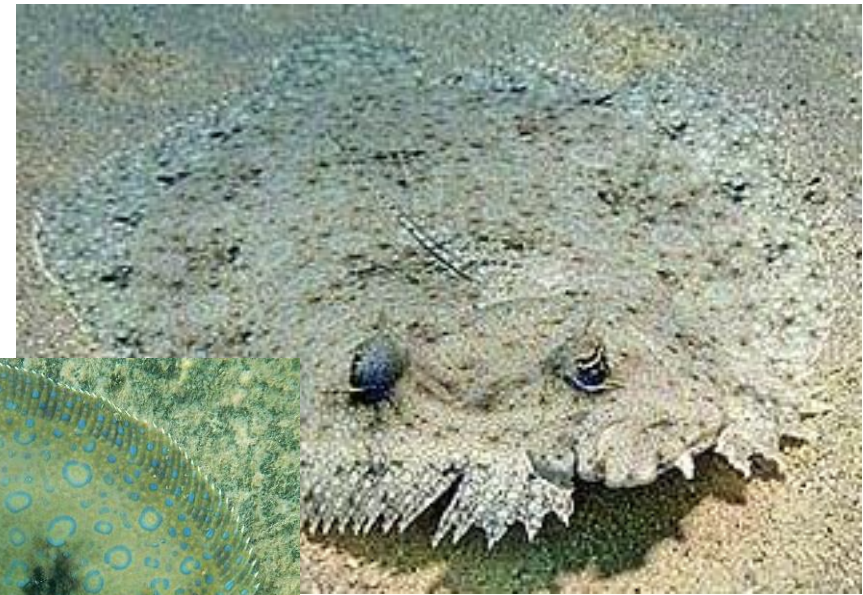
- 3x dark spots in triangular pattern
- More common in SC



Peacock Flounder

Size: 15in

- Notch in profile of head above lips
- Numerous blue rosettes covering body





Spotfin Hogfish

Size: 7½in

- Darkened spot on pectoral fin
- Bright yellow on rear dorsal



Spanish Hogfish

Size: 14in

- “Spanish royalty”
 - > *purple was a royal color*



Hogfish

Size: 2ft

- First 3 dorsal spines are long
 - Dark bar on tail
- May have spot at posterior dorsal



SESSION #5
WK 8/25



Spottail Pin

Size: 8in

- Large black spot/band at base of caudal
- All fins dusky or silver



Pinfish

Size: 8in

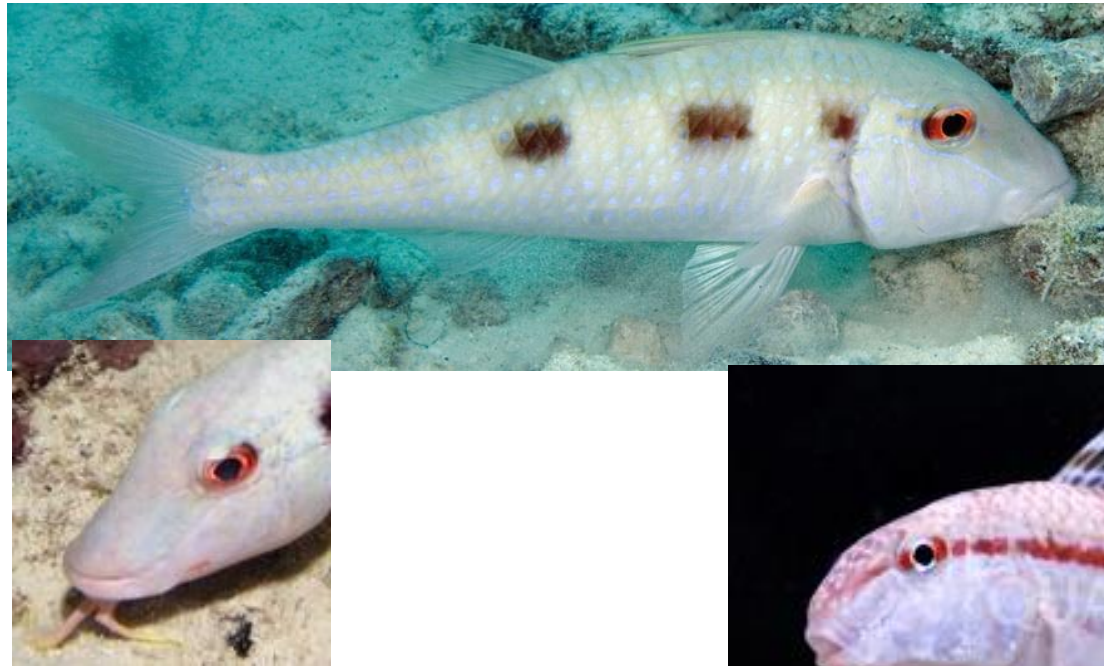
- Large dusky spot behind gill cover
- Narrow yellow-gold & blue stripes on body



Yellow Goatfish

Size: 12in

- Mid body stripe
- Yellow tail



Spotted Goatfish

Size: 8in

- 3x dark spots in a row
- 2x barbell chin whiskers



Dwarf Goatfish

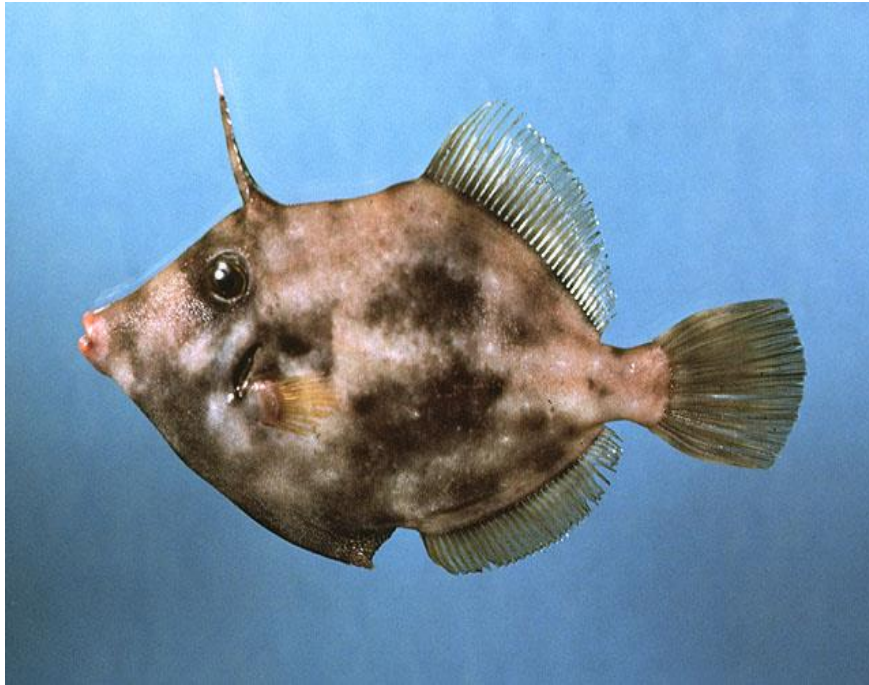
Size: 8in

- Two orange-bronze stripes on first dorsal fin
- Dusky bands on tail
- 2x barbell chin whiskers



Goliath Grouper

Size: 6ft



Planehead Filefish

Size: 8in



Bank Seabass

Size: 9in

- 6x-7x dark bars on back
- Dark rectangular blotch immediately below each bar



Sand Perch

Size: 9in

- Pale blue line markings on head
- Thin, blue to bluish-white body stripes



Oyster Toadfish

Size: 10in

- Bars and splotches on pec & caudal fins
- More common SC fish



Leopard Toadfish

Size: 10in

- Well developed fleshy tabs below lips
- More common in Florida



SESSION #6
WK 9/08



Bar Jack

Size: 14in

- Bright blue/black border running along dorsal onto lower tail fin



Blue Runner

Size: 2ft

- Dark tips on tail
- Color blueish silver
- May have faint striations/bars along body



Fairy Basslet

Size: 2½in



Scrawled Cowfish

Size: 15in



Greater Soapfish

Size: 13in

- Mottled in pale indistinct blotches
 - > *“think old man soapfish”*
- Color drab reddish to grey



Whitespot Soapfish

Size: 8in

- Random pattern of whitespots on body, often outlined in black
- Color medium to dark brown



Spotfin Butterflyfish

Size: 8in

- Bright yellow fins
- Dark spot outer edge rear dorsal fin



Reef Butterflyfish

Size: 6in

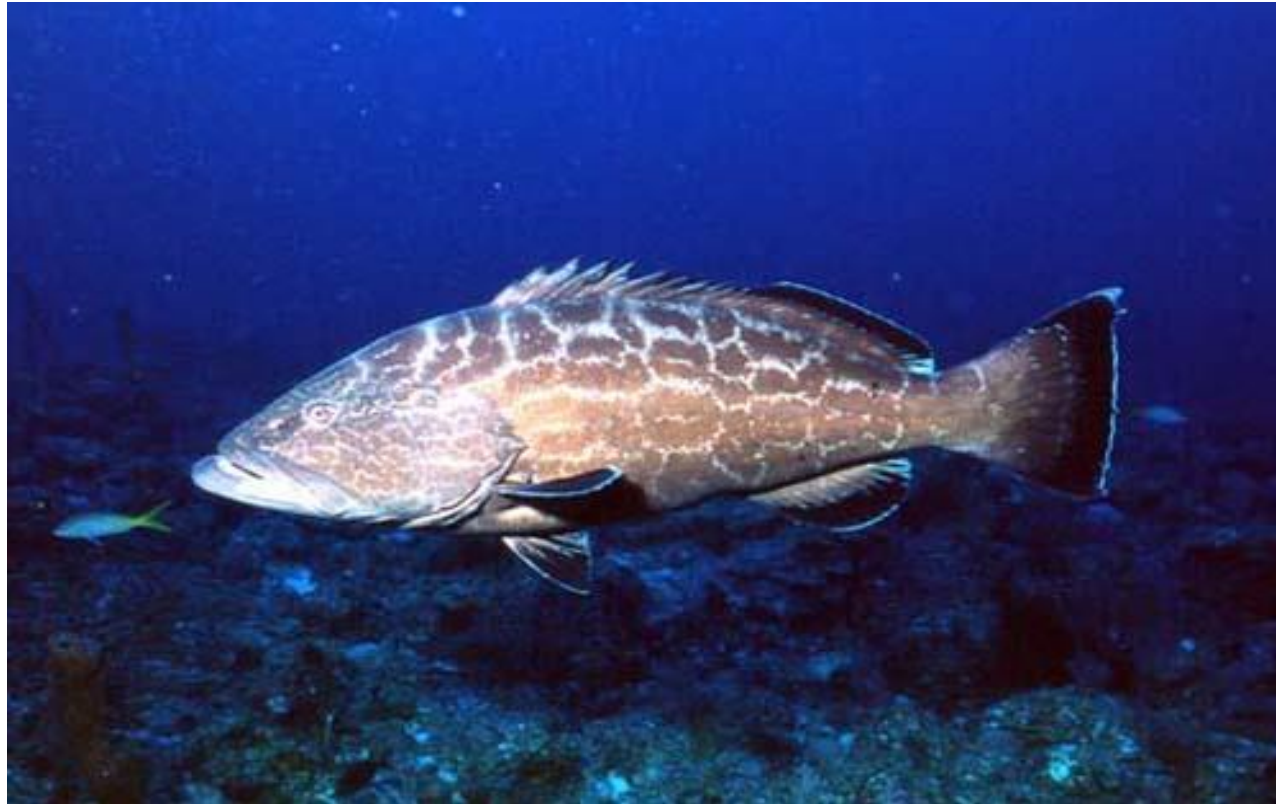
- Broad dark bar on rear body



Banded Butterflyfish

Size: 6in

- 2x wide bands midbody



Black Grouper

Size: 3ft

- Pale-Yellow borderline on pectorals
- Rectangular splotches on body
 - Black tail w/ white edge



SESSION #7
WK 9/22



Bluehead Wrasse

Size: 5in

- Blue head
- Dark-white-dark bar pattern behind head



Painted Wrasse

Size: 6in

- Blue striping marks on tail
- Several blue scale rows on body



Blackbar Soldierfish

Size: 6in

- Black bar behind head
- Color Red-pale red



Twospot Cardinalfish

Size: 3in



Inshore Lizardfish

Size: 14in

- 8x diamonds on side

Sand Diver

Size: 14in

- 8x diamonds on side
- Top bars connecting to diamonds



Rainbow Runner

Size: 3ft

- 2x blue stripes running length of body
 - > w/ brilliant yellow-gold stripe between



Yellowtail Snapper

Size: 2ft

- Brilliant yellow stripe running mid body
- Yellow tail



Polka Dot Batfish

Size: 15in

- Light-colored body
- Dark dots covering body and fins
- Color reddish brown to yellowish tan



Palefin Batfish

Size: 15in (*estimated*)

- Pale body
- No distinguishing markings
- Extremely Rare



SESSION #8
WK 10/06



Checkered Blenny

Size: 2¼in

- Black-ringed spots of orange-golden color on cheeks and base of pec fin
- Color brown-reddish brown
- 3x rows of irregular blotches on side



Seaweed Blenny

Size: 3in

- Color highly variable patterns
- Pale blue vertical line markings down snout and eyes
- Obscure colored spot behind eye



Bridled Goby

Size: 2½in

- White side “bridle” running from rear of mouth to gill cover
- Color Whitish – transparent, often without markings



Blue Goby / Blue Dartfish

Size: 4in

- Long pointed tail
- Narrow black-red stripe on top edge of dorsal fin
- Color Bluish gray to lavender



Belted Sandfish

Size: 3½in

- Dark wedge-shaped band running from belly over dorsal
- White belly patch



Chromis Sp. / Reeffish

Sunshine Fish

Size: 6½in

- Color dark olive
- Yellowish dorsal and posterior
- Juveniles:
 - > Bright yellow-green upper body
 - > Violet on sides

Brown Chromis

Size: 5½in

- Yellow on border of dorsal fin and tips of tail
- Color Brownish gray to olive-brown

Yellowtail Reeffish

Size: 4in

- Yellow tail & pec fin
- Yellow on back edge of dorsal & anal fin
- Color: Brown - Gray



Chromis Sp. / Reeffish

Purple Chromis

Size: 3in

- Color slate blue – navy blue
- Juveniles:
 - > *Bright blue crescent around upper eyes*
 - > *Color Brilliant Blue*

Blue Chromis

Size: 4in

- Slender, deeply forked tail
- Dark borders on tail
- Color Brilliant Blue



SESSION #9
WK 10/20



Clearnose Skate

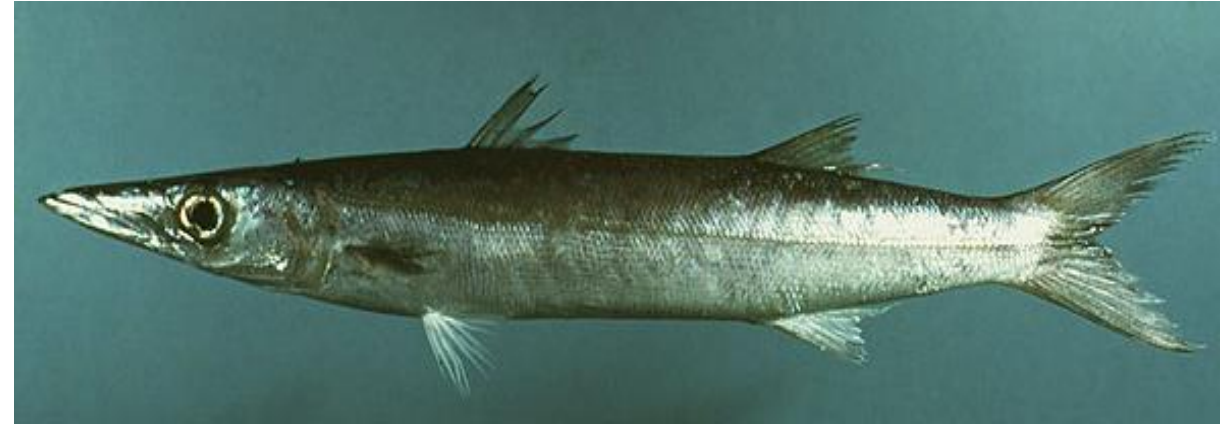
Size: 2¼in



Great Barracuda

Size: 3ft

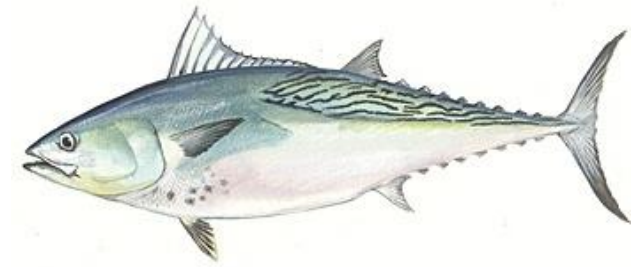
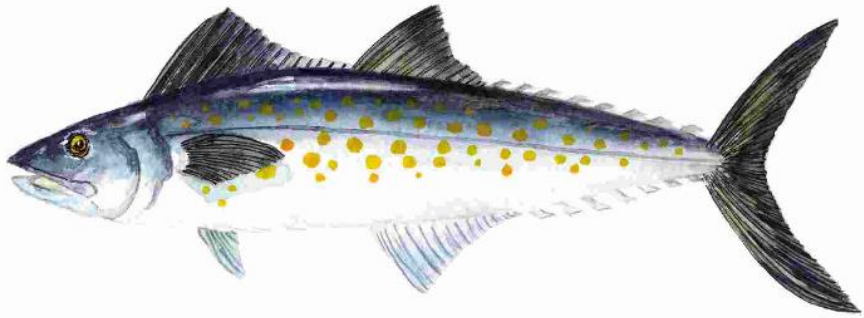
- Large underslug jaw
- Obvious pointed teeth showing



Guaguanche Barracuda

Size: 14in

- Yellowish-gold midbody stripe



Spanish Mackerel

Size: 3ft

- Yellow-gold spots on side

Little Tunny

Size: 3½ft

- Wavy bands on back/dorsal
- Several dark spots below pec fin



Southern Stingray

Size: 5½ft

- Snout & wing tips pointed
- Color brown to gray & black



Rough-tail Ray

Size: 7ft

- Snout & wing tips pointed
- Irregular row of spines & bumps from midback to tail



Emerald Parrotfish

Size: 10in



Tautog

Size: 3ft

- Color Dark olive to gray
- Short blunt snout



Pearly Razorfish

Size: 10in

- Steep snout
- Small eyes set high on head
- Color pearly white, occasional shades of blue-green or rose-yellow