

SOUTH CAROLINA AQUARIUM
2021 ANNUAL REPORT

OUR MISSION

is to inspire conservation of the natural world by exhibiting and caring for animals, by excelling in education and research and by providing an exceptional visitor experience.



STRATEGIC LEADERSHIP

Kevin Mills
President and Chief Executive Officer

Jack Higgins
Executive Vice President
and Chief Operating Officer

Courtenay Lewandowski
Chief Advancement Officer

Jason Oddo
Chief Financial Officer

Amie Yam-Babinchak
Chief Marketing Officer

Brian K. Brasher
Director of Capital Projects
and Facilities

Rachel Kalisperis
Director of Animal Care

Kevin Kampwerth
Director of Aquarium Experience

Lauren McDaniel
Director of Guest Services

Sara McDonald, Ph.D.
Director of Conservation

Paul Nuñez
Director of Team Development
and Culture

Brian Thill
Director of Education

Jamie Torres, DVM
Director of Veterinary Care



Dear Aquarium Family,

On the evening of November 16, an Aquarium technician flipped a switch and watched with satisfaction as a bloom of brilliant lights and luminary installations bathed the building inside and out in a warm glow.

Aquarium Aglow debuted, and a new local family tradition was born. Conceived as a tonic to the previous year's turmoil and uncertainty, the after-hours experience offered a novel way to explore the Aquarium and to celebrate the holiday season.

Little did we know that the seven-week event would not only be well received but would also sell out its initial viewing times. It was a resounding success and one that we plan to recreate and expand upon for years to come.

Symbolically, Aquarium Aglow served also as a vivid reminder that a resilient Aquarium had overcome strong odds and had emerged from the pandemic brighter and stronger than ever. In fact, the entire year of 2021 provided evidence of an organization on the rebound — re-engaging communities, rehabilitating animals and replenishing the natural environment.

In the field, our conservation team worked statewide to lead the cleanup of compromised waterways and wild spaces. More than half a million pieces of debris were collected and documented in our Litter-Free Digital Journal, a project in the South Carolina Aquarium Citizen Science app, constituting valuable data for identifying source points of pollution and endemic concerns.

In the historic Maryville township, a team of intrepid scientists from the Aquarium and partnering agencies navigated a beleaguered saltmarsh, replanting marsh cordgrass and giving new hope to an unstable environment.

In classrooms across the state and around the globe, our in-person and streaming digital education programs introduced children to important science constructs and environmental concerns. Aligned with state and national curriculum standards, these programs offered weary teachers a brief respite and captivated students with animal appearances.

The Aquarium itself grew carefully in response to the changing conditions associated with COVID-19, and by midsummer our halls were teeming with new and repeat guests. Our measures to ensure safety were appreciated by most and served to protect our guests, our team and our animals, alike.

By the end of the year, it was clear the Aquarium had triumphed over adversity and was once again positioned to achieve its long-range plans. Record earned revenues, robust fundraising and government support enabled the creation of emergency reserves and a new investment strategy that will help protect the Aquarium from future adversity and “black swan” events.

Now we can look forward with confidence. The future is bright — and you have helped pave the way. For that, we are truly grateful.

Sincerely,

Kevin Mills
President and CEO,
South Carolina Aquarium



Dear Friends,

The past year will stand out powerfully for me and for the Aquarium family as one marked by a swell of hope, and the promise of a return not merely of normalcy, but the potential for much more. If the close of 2020 felt like survival, the close of 2021 felt like momentum — for the Aquarium family, and for the community we are honored to serve.

The Aquarium's board of directors was engaged throughout the year to consider how best to prudently invest in the programs most central to our mission. We worked to preserve resources where possible and to proceed with cautious optimism, even as we enjoyed record-breaking paid attendance and membership, as well as funding from government sources. We were witnessing a rebirth, and in this transformational moment, we allowed ourselves to return to our most ambitious plans, contained in Landmark 2025.

This year, we finalized our agreement with the City of Charleston to create the South Carolina Aquarium Learning Lab at the Maritime Center. This project is much more than an expansion of usable floor space, or a place to house programs and people. It represents the first step in reconceiving

the way our city connects to the water, and how our students absorb the natural science concepts that will enable them to face a future for which there is no road map. The Learning Lab will be both a gateway to a bustling new east peninsula cultural corridor, as well as a living lens through which future generations will observe and respond to shifting shorelines, and the demands of a planet faced with challenges unforeseen 50 years ago.

This year we celebrated the return of a cornerstone program that will ultimately animate the Learning Lab: the Teen Science Café — a groundbreaking series which connected curious students with astronauts, biologists and coders, all in the service of priming them for careers in STEM. We deepened our investment in providing virtual programming to students of all ages, across the country and globe, exposing them to sea turtles and the tireless teams that care for them within our Sea Turtle Care Center™. We even formalized a partnership with the College of Charleston and Charleston County to develop a Center of Resilience Excellence in South Carolina (CORE SC) which will operate as a center for innovative technological response to a broad range of environmental issues facing our region and the world. We have invested in a return to leadership, and we have invested in the future of our community.

Seizing this moment, returning to leadership and taking our programs and our impact to the next level, has been an effort driven in large part by our donors. This was a year in which we embraced the knowledge that survival is not enough; we are called to lead. The Aquarium team joins me in thanking you for setting us on firm footing and lighting the way to a brilliant horizon.

Sincerely,

Jonathan M. Zucker
Chairman of the Board,
South Carolina Aquarium

BOARD OF DIRECTORS

Chairman
Jonathan M. Zucker

Vice Chairmen
John A. Hill
Pete Sniderman

Treasurer
J. Donald Higgins
Director Emeritus

Vice Treasurer
Tom Wright

Secretary
Dee Fortson

Members
Dan Battista
Jessica Brewer
Elizabeth Colbert-Busch
Larry Colshan
Peter Conway
Robert C. Crawford III
John Danahy
Director Emeritus

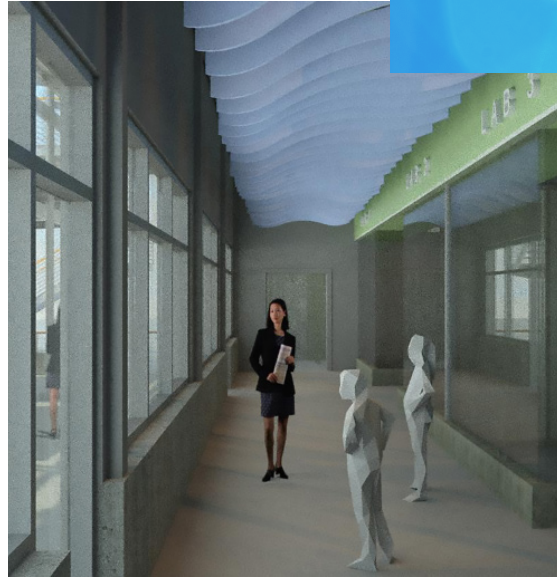
Suzanne Dickerson
Anthony S. Dixon, Ed.D
Steve Dudash
Steve Durkee
W. Andrew Gowder, Jr.
Steve Gray
Dwayne Green
Jim Hansen
Heather Hodges
Mason Holland
Valerie Howell
Lee Hurzeler
David Johnston
Palmer E. Krantz, III “Satch”
Judge Daniel E. Martin, Jr.
Gary McLaurin
Guy Maurice Meares, III “Tripp”
Tom S. Mullikin, Esq.
John Neely
Missy Parker
William M. Patterson, Ph.D.
Scott Snider
Nina Sossamon-Pogue
Peter Stonefield
Jeddie Suddeth III
Emily Swanson
George P. Watt, Jr.
Pam Wilson
David Wood

Chairmen Emeriti
James L. Ferguson *
Kenneth Seeger
Hilton C. Smith, Jr.
M. William Youngblood
Jerry Zucker *

Directors Emeriti
Pat Conroy *
John Danahy
William A. Finn
Bruce Hecker
J. Donald Higgins
Sheila Hodges
Peatsy Hollings *
Kate Jerome
Robert R. Macdonald
Layton McCurdy
The Honorable Robert E. McNair *
Mary Alice Monroe
The Honorable Richard W. Riley
Victor Samra, Jr. *
Catherine Smith
Theodore Stern *

* Deceased

EDUCATION



THE LEARNING LAB AT THE MARITIME CENTER

In December, Charleston's City Council unanimously approved the Aquarium's plans to develop the new Learning Lab at the Maritime Center. The vision for this unprecedented education facility includes creating a new home for Dominion Energy School Programs, allowing us to nearly double the number of K-12 students currently served by this core standards-based STEM program. The Learning Lab will also house our expanding slate of teen programs, including the Teen Science Café and the newly conceived Teen Conservation Corps, which trains students to embrace innovative solutions for the rapidly changing environment that surrounds them. The facility will welcome community partners to engage in dialogues around environmental and social justice and climate change, among other topics. With the conceptual phase of planning for the facility now well underway, new construction and renovations will commence in early 2023, with plans to open publicly in early 2024.

VIRTUAL LEARNING AMPLIFICATION

With a year of pivoting and perfecting under our belts, the Aquarium expanded virtual learning opportunities to students all over the world. Weekly virtual visits hosted on our social media channels reached 3,000 households per visit, and virtual components were added to several of our program offerings, including our Holland Lifelong Learning series, enabling people to stay connected with us and other scientific experts from the comfort of their own homes. 2021 was also the year that we reached our goal of having programs in all 50 states. Having broadcasted in 30 countries, our virtual learning team has become experts in sharing their knowledge and passion from inside our walls with the world beyond.

HIGH SCHOOL INTERN PROGRAM

A cornerstone of the Aquarium's teen programming, our High School Intern Program was in full swing during the summer of 2021. This program provides paid summer working experience for rising seniors in the tri-county area as well as fieldwork and professional development opportunities. After 99 applications and 60 interviews, 10 local students were selected to participate, representing eight different high schools. Throughout the program, interns were trained on engaging with guests at our touch tanks, handling ambassador animals like our snakes and turtles and providing an exceptional guest experience in our galleries by sharing their animal knowledge. Classes also provided students with practical skills like resume writing and interviewing techniques, giving our interns a solid foundation and a head start as they enter the workforce or postsecondary education.

CONSERVATION



PLASTIC POLLUTION COMMUNITY ENGAGEMENT

The Aquarium spent the last year rapidly expanding programming beyond our walls in many different ways. With the help of dedicated volunteers and partners, we were able to increase our reach throughout the state including monthly litter sweeps in 10 different counties. We also supported 35 group sweeps, providing supplies and instruction on data collection, engaging over 1,250 people. Using data collected in the Litter-Free Digital Journal, a project in the South Carolina Aquarium Citizen Science app, we provided extensive analyses to Harbor Island, Kiawah Island, Folly Beach and Isle of Palms, as well as an overall state analysis. This data was also used to provide testimonies to local and state leaders, resulting in many victories including a new smoking ban on Folly Beach.

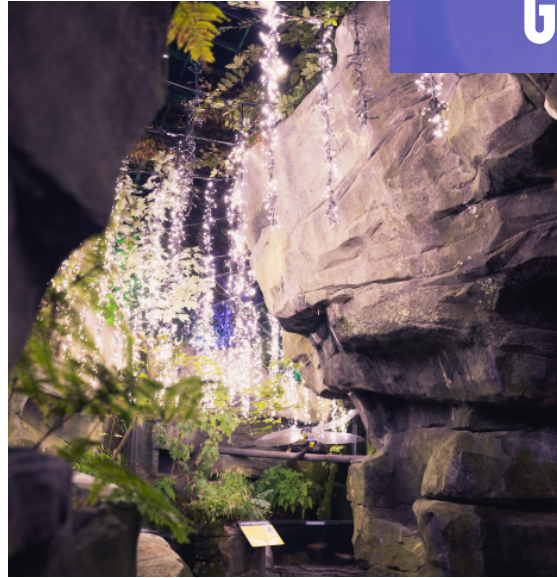
RETURN OF COLD-STUNNED PATIENTS

In November 2021, the Aquarium admitted eight juvenile Kemp's ridley sea turtles into the Sea Turtle Care Center™ from Cape Cod, Massachusetts. All were part of a mass stranding event where sea turtles become "trapped" as the water temperature cooled quickly, leaving them cold stunned. As the only sea turtle hospital in South Carolina, we care for every sea turtle that is found in need along our coast. We've been fortunate throughout the years to open our doors and assist patients from other states, including patients from these mass stranding events in New England. State needs required all of our focus in 2020, but being able to open our doors again to these patients and share their journeys with our guests was a delightful holiday treat during the winter. All eight of these patients fully recovered and were released back into the ocean, completing the journey home.

DOLPHIN RESEARCH

Charleston is home to a wild population of bottlenose dolphins, whose numbers fluctuate between 300 and 900 throughout the year. The Aquarium's volunteer and teen programs manager and dolphin researcher, Meghan Galipeau, is part of a research team that noticed resident dolphins exhibiting unique feeding behaviors in the Charleston Harbor. Bottlenose dolphins around the world are known to trap fish against natural or non-natural barriers, a behavior called "barrier feeding." Dolphins in the Charleston Harbor were observed barrier feeding up against docked commercial shipping vessels at various terminals, which has never before been documented. This behavior, coined "shipside feeding," led the research team to conduct a formal analysis and publish a paper with their findings. Shipside feeding is a unique example of dolphins adapting to their shared environment with humans in their urban estuary home in Charleston.

GUEST EXPERIENCE



AQUARIUM AGLOW

A brand new experience in 2021 was the introduction of Aquarium Aglow, a unique holiday light spectacular. As we passed the one-year mark of the COVID-19 pandemic, the Aquarium saw an opportunity to bring light, literally, to our still weakened and somber community. Throughout the year, the immersive experience was brought to life, designed and constructed completely in-house. Marketed as an elegant evening experience at the Aquarium, catered to adults but still family friendly, the response was phenomenal. Thousands of lights illuminated indoor and outdoor exhibits, from luxe and innovative to festive and nostalgic, wowed guests and proved a successful formula, hitting 157% of our revenue goal and 111% of our attendance goal. We look forward to establishing Aquarium Aglow as a Lowcountry holiday tradition in the years to come!

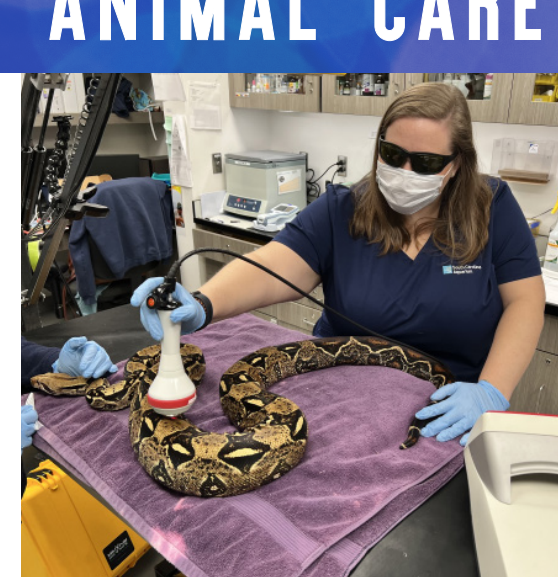
NEW ANIMALS

In collaboration with the Association of Zoos and Aquariums Specials Survival Plan® Programs for both North American river otters and roseate spoonbills, new animals joined the Aquarium family and have quickly become guest favorites. We introduced two juvenile river otters in the spring, a brother duo that was properly welcomed with the help of devoted fans and followers who chose their new names: Charlie and Beau (short for Charleston and Beaufort, respectively). Both otters have acclimated well to their new habitat in the Mountain Forest and delight guests each day with their curiosity to connect tankside with them. Two roseate spoonbills joined the Saltmarsh Aviary in the fall, the first of their kind at the Aquarium. These two females, named Coral and Pearl, have quickly become fan favorites thanks to their uniquely vibrant pink plumage and characteristic spoon-shaped bill.

IDEA EFFORTS

The Aquarium spent another year making exceptional progress in advancing the Aquarium's ambitious goals for inclusion, diversity, equity and accessibility (IDEA). Striving to expand access to the Aquarium for underserved communities, we created and distributed 3,550 bilingual bookmarks to local organizations and schools, increasing visibility of our discounted Angelfish membership option. Through our partnership with the Charleston County Public Library system, we provided 10 Family memberships for library patrons to check out at no additional cost. These memberships were used 152 times and served 4,590 individuals. Our staff-led IDEA team coordinated multiple trainings and internal discussions to promote belonging and transparency within our team culture.

ANIMAL CARE



OUR WORLD WITHOUT CAMPAIGN

The Aquarium's Our World Without rescue campaign closed in March 2021, demonstrating the overwhelming support of our community of supporters all over the world. With approximately 80% of our revenue being generated by general admission sales and memberships, being closed for 68 days and operating in extremely limited capacity upon reopening was a devastating blow to the entire organization. Facing the threat of losing both our education programming and our Sea Turtle Care Center™, we called upon our leadership, longstanding donors and the public like never before with a goal to raise \$1.6 million. Securing these funds and completing the Our World Without campaign was not only instrumental in keeping these programs operating, but also enabled us to stabilize our operation and lay a foundation to build back stronger than before.

SUSTAINING OUR ANIMALS

This year, the Aquarium marked the launch of a dedicated fundraising effort to secure resources for the multifaceted care of the more than 5,000 animals within our facility. Donors were presented the opportunity to sponsor and sustain elements of the animal care experience, including their favorite exhibits and species. The Animal Care Sustainers Fund drove a powerful movement in philanthropy, and by the close of the year, we secured nearly \$1 million for areas of work less visible than others, including our Nutritional Care Program, our Veterinary Innovation Program and our Animal Ambassador Program, all of which have now been fully funded by generous donors and sponsors. Our annual Conservation Gala live ask opportunity secured over \$200,000 for the Animal Care Sustainers Fund, enabling us to purchase a cold laser therapy machine to aid veterinary staff in treating animals with a wide range of injuries.

OPERATIONAL AND FINANCIAL FORTIFICATION

As our community emerges from the days of the pandemic, the Aquarium finds itself in an encouraging financial position thanks to the support of our donors, members and guests. Multiple factors contributed to our institution finding its way to its firmest financial footing in our 21-year history. Having secured nearly \$5.6 million in federal relief funds, we enjoyed our best year ever for admission revenue, while fundraising reached the same level as 2020's record year. The launch of the Aquarium Aglow holiday lights experience was a huge success that generated over \$400,000. This infusion of critical funds enabled us to develop, for the first time, an investment strategy to keep our organization strong and stable for the next generation. Each of these exciting successes are due to the community's commitment to our survival, and we will continue to steward these resources with prudence and intentionality in the years to come.

THANK YOU

As evidenced by a turbulent 2020, you never leave our side, even in moments of darkness and instability. Whether inspired by our award-winning education programs, our world-class animal care operations or the powerful spirit of a place that draws your family closer to one another, your belief in our work and our people is what makes us who we are, and renders us resilient.

2021 was a year of returning to the unique corners of our mission and re-engaging with the diverse array of projects that make our institution so unique. You found your way back to our mission, perhaps even your unique corner of that mission, and because of you, we are positioned to lead as never before. We are all honored by your willingness to walk alongside us on a journey unlike any other. You truly make us what we are.



\$250,000+ DONORS

South Carolina Department
of Parks, Recreation
and Tourism
Jonathan M. Zucker *

\$100,000–\$249,999 DONORS

City of Charleston
Mary and Mason Holland
Holland Family Charitable Fund
The Robert and Janice
McNair Foundation
Cara and Kevin Richard
Hiroko Yanagida and
Frederick Baker

\$50,000–\$99,999 DONORS

Cheryl and Thomas Boswell
The Oliver S. and Jennie R.
Donaldson Charitable Trust
The Samuel Freeman
Charitable Trust
John and Marilynn Hill *
Ingevity
Susan and John Neely
In Memory of Addison Runge
Emily and Steve Swanson *

\$25,000–\$49,999 DONORS

Anonymous (1)
The Boeing Company
Charles River Laboratories
International, Inc.
Charleston County Government
Prudence and Bill Finn *
Valerie and Scott Howell
The Tom and Lynn McNally Family *
Mercedes-Benz Vans
Pathfinder Foundation, Inc.
The John and Carolyn Peterson
Charitable Foundation
PNC Financial Services Group
United States Department
of Commerce
J.H. Walker Legacy Foundation
Westbrook Brewing Company

\$10,000–\$24,999 DONORS

Anonymous (3)
Aflac Charitable Fund
Bessent-Freeman
Family Foundation
BlueCross BlueShield
of South Carolina
Rachel and Tim Brennan
The Jennifer A. Chalsty Foundation
Mary and Peter Conway
Foxhall Family
Garden City/Surfside Beach
S.C.U.T.E.
Georgia Tech Research Corporation
City of Isle of Palms
CW and Dorothy G. Love
Foundation, Inc.
Stacie and Davis Marksbury
Frances Marlatt
Martech Research, LLC
Tammy and Gerald McGee
The Meier and Linnartz
Family Foundation
Anna B. Milburn Charitable Trust
MUSC Children's Health
Fran and Dennis Nolan
Ann C. and Robert O. Orders, Jr.
Family Foundation
Joan Coulter Pittman Fund
of Coastal Community
Foundation
Barbara Rudolph
Alexandra S. Samra
Dr. and Mrs. H. Del Schutte Jr. *
See Stars Charitable Fund
South Carolina Federal
Credit Union
TD Charitable Foundation
Trident Construction
TurtleCon Fund
Wild Dunes Resort
Michael and Pam Wilson
Kathleen and Tom Wright
Mrs. Anita Zucker and Family *
The Jerry and Anita Zucker
Family Endowment

\$5,000–\$9,999 DONORS

AECOM
Christopher Kauker, CFP®,
Ameriprise Financial
The Baden Family
Bank of America
Blackbaud
Jessica L. Brewer and Don Taylor
Mark and Judy Buono
Caldwell Partners
Cedarhurst Foundation
The Ceres Foundation, Inc.
Charles A. Weyerhaeuser
Memorial Foundation
The Charleston City Union
of the International Order
of the King's Daughters
and Sons
Coastal Community Foundation
of South Carolina
Colbert Family Fund
Pebby and Donald Combee, Jr. *
Mary Ann and John Danahy
Daniel Island Community Fund
DeBordieu and Hobcaw S.C.U.T.E.
Robin and Bill Downe
Duke Energy Foundation
Judith Fainsan-Helper
The Fortson Family
Full Circle Farm
Lynne and Dennis Gettelfinger *
The Gildea Foundation
Building System Solutions
Colleen and Lee Roy Hess
Peg and Don Higgins
Hoffmaster Group
Dorothy and George Ingram
Denise and Michael John
The Jones Family
Anne Lee
Lowe
Shirley and Walter Massey
Erika and Steve McAllister
McConnell Real Estate Partners
Ginger and Jay Millen
National Marine Sanctuary
Foundation
Nexsen Pruet, LLC

* Charter Member

Omatic
Melissa and Jeffrey Parker
Jill and Greg Parsons, M.D.
Nelle Pender and
Hugh Gouldthorpe
Publix Super Markets Charities
Rheos Nautical Eyewear
Rochman Charitable Foundation
Joseph J. Schott Foundation
Sea Turtle Getaways
Karen Sherwood *
The Stonefield Family
TD Bank
The InterTech Group
TIGHITCO, Inc.
Lorraine Tilney Fund
University of South Carolina
Nathan and Alexis Walp
Wells Fargo
Whiting-Turner
Dwight and Catherine Williams
Libby and John Winthrop *
Cheryl Wood Mathias

\$2,500–\$4,999 DONORS

Anonymous (2)
Aerolina, LLC
Lesley Ammons
Anderson/Brutzer/Hunter Family
Sharon and Nigel Bowers *
Mace and Chris Brown *
Shirley and Gregory Brown
Richard and Ann Burton
Katy W. Chung and
Peter B. Key, Ph.D. *
Carol and Larry Colshan
Crews Subaru of Charleston
Lynn and John Cunningham *
Terry Ann Graham
Elise and Stephen Heape *
Noah, Jessica and Nathan Hobbs
Shayna and Travis Howell
Island Farm Foundation
Patricia and William Jetton *
Kiawah Island Turtle Patrol
Knecht North America, Inc.
Brian and Louise Lingerfelt

Jennifer Lisiak and
James Tomlinson
Lumina Foundation
Sandra and Malcolm MacCoss
The Marksbury Family Foundation
Angela McCarter
Bella Gray McCurry
Kathy and Jamie McKee
Mary Alice Monroe and
Markus J.P. Kruesi, M.D. *
Dirk and Virginia Mosis
Bob Newhouse
Julie Nocida
Ira M. Resnick Foundation
Ann and H. N. Ritter III *
Nicole and Ben Russell-Schlesinger
David and Kristina Shatz
Sherman Charitable Trust
Ike and Betsy Smith *
Solon-Andreas Foundation
Nina Sossamon-Pogue and
Benjamin Pogue
South Carolina State
Ports Authority
South State Bank
Amanda Sumner
Karianne and William Suski
Vertical Roots
Volvo Car US Operations
Community Fund of Coastal
Community Foundation of SC
Peggy Watt and George P. Watt, Jr.
Michael Worley
Suzan and Stephen Zoukis

\$1,500–\$2,499 DONORS

Ashley Hall
Kris and Mac Barnhardt
Laura and Michael Baur *
Bohren Law Offices
Joseph J. Calandra, M.D. *
Alyssondra Campaigne and
George Abar
Coastal Expeditions
Stacy and Michael Cozad
Susan and Raymond Crane
Custom Ink Fundraising
Beverly Daily

Dawn and Paul Darr
Jean and John Denning *
Sam DiBenedetto and Family
Penny and Kevin Dygert
Julia and Craig Eddy
Jacqueline and
Colin Edgerton, M.D.
Edisto Beach Loggerhead
Turtle Project
Employees Community Fund
of Boeing South Carolina
Mark and Catherine Ensio
Family Foundation, Inc.
Tamara Ensio Johnson and
Bradley Johnson
Anna and Colin Ewing
exaqueo
Sherry and Gary Forsee
Sara and Stephen Goenner
Google
The Rodger and Kate Graef
Family Foundation
Mary and Steven Gray
Half-Moon Outfitters
Happy Gulls Endowment
Vicki A. Hardwick
Nedra and Bruce Hecker *
Alexandra and
Christopher Heine, M.D.
Senator Arthur C. Hoey, Jr.
IMA Financial Group
The Joanna Foundation
Bettie and Jim Keyes
Diane D. Lauritsen, Ph.D. *
Barry and Chris LeCerb
R. Leonard Family Fund
Julita Lisewska and David Wood
Teresa M. Luhrs, M.D. and
John Camp *
Michelle Maclas and
Patrick Flume *
Madyl Fund
Mason Preparatory School
Dr. Tonya M. Matthews
Beth and Tom McCarty
Kelly McCracken
Dawn and Jim McDonald
Elizabeth and Tripp Meares *

Susan J. Morrison *
Lawrence H. Moser *
Margalit and Gary Neiman, Ph.D.
Noah's Fund Inc.
Orion Associates, Inc.
Nancy and Craig Pitcairn *
Gretchen and Sanford Prater
Presper Family
Jennifer Reid
Jackie and Jean Rion, Jr. *
Claire and Eric Smith
Julie and Eric Snow
John E. Swink, Jr. *
Synovus
Karen and Dave Toorks
USI Insurance Services, LLC
Rebecca and James Wick
Gwynne Williams and J.M. Nemish

\$1,000–\$1,499 DONORS

Anonymous (3)
Kimberly and Paul Anuszkiewicz
Ross and Alexis Appel
Beverly and Alan Ballow *
Paula and Bob Bartsch
Nancy and Howell Beach
Rona and John Bobey *
BoomTown!
Jane Boyd Broce
Boylston Family Fund
Breakthru Beverage South Carolina
Deborah and W. Melvin Brown
Karen and Louis Burnett *
Nancy and Dennis Cawley
Celebrate Surfside Beach Festival
Rongrong Chen and Andrew Hsu
Denise and John Cicarelli *
Enid and Dennis Clark *
Leigh and Duffy Connolly
The Ann F. and John W. Copeland
Charitable Foundation, Inc.
The Coward Family
Druanne and Ralph Cummins
Suzanne Curran, M.D. and
Darcy J. Curran
Deirdre Dickinson Memorial Fund
Mary Downey
Mark and Elizabeth DuPuis

Kay H. Durst, M.D. and Brad Rose
Katie and James Ewing
Karen and George Fisher II
George and Nancy Gates
Emily and Brian Giarrocco
The Gleason Family Foundation
Grand Palms Resort
Laura and Kevin Gregoire
Lowell D. Grosse
Joan and
Perry Halushka, M.D., Ph.D. *
David and Jill Hamilton
Mary Beth Hancock
Amy and William Harley
Jill and Steve Harrison
Brucie and Low Harry, Jr.
Hendrix Charitable Foundation
Sheila Hodges *
Jana and Lee Hurzeler
Andrea Jackson
Monica A. Jacoby
Paul and Marilyn Jones
Susan and Nathan Jones
Kelly and Kevin Kampwerth
McKenna Paige Keller and
Emerson James Joyner
Andrea and Charles Kelly
Windham Key
Marlon Kimpson
Catherine and Scott Kinder
Christina and Andrew Kirk
Becky and Satch Krantz
June and Mariano La Via *
Susan and Peter LaMotte
Allison Lang
The Legasey Family
Maureen and William Linn
Jim and Marybeth Lintzenich
Tamyé and Richard Lozyniak
Elisabeth and Spencer Lynch *
Catherine and Robert Macdonald
Terry Maple
The Burnet and Marion
Maybank Foundation
Jen and Josh McConnell
Herbert and Diane McGuire
Chalena and Roddy McIlwain
Chappy McKay *

McKeehan Family *
Carl W. Meares Foundation
Katherine Moore and
Thomas V. Ognibene *
Misty Jo and Ike Neilson
Matthew Nelson
Thomas O'Malley
Debbie and Jim Ott
David and Deborah Oyster
Pawleys Island Brewing
Company, LLC
Max and Helen
Philippson Foundation
Claudia Piano
David Profozich
Scott Purviance
Paul and Diana Radkoski
Addy Reynolds
Richland County
Conservation Commission
John M. Rivers, Jr. Foundation
Susan and Athalie Rohr
Chris and Michael Rousseau
Nedenia Rumbough and
Jan Roosenburg
Claire and Joseph Schady, Jr. *
John H. Scofield *
Silver Moon Property Management
Elaine and
William Simpson, Jr., M.D. *
Margaret and Park Smith II
Susan and Theodore Soderlund *
Walter Stenger
Annmarie and Matthew Sullivan
Takeda Pharmaceutical Company
Rowan and Julie Taylor
Sally and Thorne Vail
Martin and Mary Vogt
WEDA Eastern Chapter
Sylvia H. Wilson and
Joseph W. Rohrbacher
Adam D. Witty

\$500–\$999 DONORS

Anonymous (3)
Gloria Schraibman Adelson *
Agency 22 Insurance Group, LLC
Daniel Aguirre and Brittney Lane

All Seasons Landscape and
Maintenance, LLC
Claire and James Allen *
AmazonSmile
Catherine and William Ardrey
Fred and Mary Jo Armbrust
AstraZeneca
Barefoot Ladies Golf Association
Shon Barnett and Cynthia Barnett
Bayer Healthcare, LLC
Sherrie Bishop
Noah and Barrie Blake
The Boardman Family
Cynthia T. Brock
Donna Brown
Erin Bunkley
Elizabeth Buske
C.T. Lowndes & Company
Sandra Cain
The Campbell Family *
Angela Carnicom
Chernoff Newman
Gilbert and Drucilla Copeland
Gail and David Corvette
Erble and William Creasman, M.D. *
Karen Dalke
Frank DeBolt
Christina Dickerson
Suzanne Dickerson
Carol and Edward Dinan
Don Doyle and Marjorie Spruill
Lisa DuBois
Jacalyn Easterling *
Elliott Davis LLC
Peggy Ellis and Peter J. Van Every *
Mary and James Fernandes *
Jacqueline Francis
Ivy and David French, M.D.
Gloria and Ralph Friedgen *
Gessner Family Foundation
Catherine and James Gidcumb
Paul and Oscar Giger
Foundation, Inc.
Christine Deviney and Jay Glenn
B. Diane Goff *
Melinda and W. Andy Gowder, Jr. *
Eric Grosse
Tomas and Cheryl Hainich

Mary Hall
Bridget Harrell
Dr. and Mrs. Robert N. Harris, Jr.
Cathy and Kevin Harrison
Wallace L. Head Revocable Trust
Dawn and Ed Heavey *
Marjorie Hekman and
Patrick Philipp
Meredith Hemenway-Betzhold and
Phillip Betzhold
Robert and Elizabeth Hill
Corie Hipp Erdman *
The Hudson Family Trust
Kelly Hunter
Susan and Quentin Jackson
Peggy Jacobs
Patricia Janes
Mary and Patrick Jansen
Cathy and
Joseph Jenrette III, M.D. *
David and Myra Jones *
Lauren and Tony LaVecchia
Nancy Layman
Debra Lehman
Max and Mary Lindner
Joanne Lingerfelt
Carmelina and Al Livingston
and Family *
Lisa and Shawn Livingston
Jane and Rayner Lotton
Heidi Luedtke
Eileen Lutzow
Todd and Sally Lynch
Patricia E. MacFarland *
Vincent Malandra
Renee and Bill Marshall
Danny E. Martin, Jr. and Reba
Hough-Martin
Susan H. Marus and
Newman J. Smith *
James and Christine McAuliffe
Mike and Leora McAuliffe
Dana and Vincent McCarthy
Suzanne McGraw
Joseph T. McNamara *
Leah and Edward McNellis *
Pauline and Mark Meeks
Kenneth Mercer and Heidi Foley

Leah Mitchell
Wendy and Henry Molony
Machelle Morningstar
Suzanne and Harvey Morrison
Megan and Clayton Mazingo
The Netter Foundation, Inc.
Melissa Newhall and George Yu
Laura Nokland
North Myrtle Beach
Sea Turtle Patrol
Ashley O'Brien
Mayor Patrick M. O'Neil, Ph.D. *
Mary and Tom Parrington
Rebecca Parsons
Jill and Matthew Patrick, D.V.M.
Alyssa and Robert Phillips
Kathryn and Russell Pickett *
Madeline and Shelly Revkin
Ray Reyes
Richard and Carolyn Riley
Bené and Charles Rittenberg *
Mary Robinson and
Michael Stough
Diane E. Rowan and
William W. King *
Corey and Ami Rutelonis
Janice and Christopher Ryan
Rogan and Dunne Saal
Barbara Sanders
Lisa and Michael Schools *
Jane Scott
Brooke Seidelmann and
Chris Jaros
Seyahan Jewelry
Mitchell L. Sherman
Char and Todd Shryock
Robert and Helen Siedell
Troy Smith and
Renee Hayward-Smith
Whit and Anne Smith *
Michael and Chelsea Sosnowski
Margaret and James Stands, D.O. *
Monte and Holly Stenger
Megan and Brandon Stevens
James and Linda Strand
Jessica and James Suddeth III
Tucker Summerville *
Jane and Allyn Taylor

Taylor Agency
Terrapin Beer Co.
Linda Tompkins
Charles Troiani and Sharyl Sutton *
Vitreus Foundation
M. Ann Welsh, Ph.D. and
Gordon Dehler, Ph.D. *
Carly and Tom Westerman
Sharon and Drew Weston
Shawn and Jennifer Wienke
Jean and James Wolitarsky
Laura and Ed Woodcock
Workday, Inc.
Bryan Young
Elizabeth R. Zahrn
Carole and Marc Zaloumis

\$300-\$499 DONORS

Anonymous (2)
Stacy Alberico *
Susan and Charles Altman *
C. Broughton Anderson,
M.Ed., Ph.D.
Susan Anderson-Rivaleau
Susan Anfin and Jim Doyle
John and Charlie Barnes
Barbara Baumann and
Mike Conrad
John, Lisa and Carmela Befumo *
Beverly Beregoway
Sherri and Scott Bice
Susan and Bruce Bobey *
Nicole Bohm and Ron Neyens
Dawn and Rob Bowers
Ashley Britell, M.D. and
Patrick Britell, M.D.
Cora and Earnest Brown *
Heather Burgess
Janice and John Burr
Katherine and Richard Byrd
Matthew and Christa Cantrell
Lee Carpenter
Mark and Laurel Chesnut
Janette and Anthony Chipas
Angela and Philip Clarke *
Douglas and Allison Cooner
Della Coulter
Jeni Crabtree

Sara and Matthew Cyr
Kaveh and Mary Dabir
Susan and Daniel Davis
Paula and Travis Dew
Meredith and Peter Dieppe IV
Aaron Dodson
Cameron R. Doll
Sarah Dowd
William and Debby Eiser
Carolyn and Chuck Eiserhardt, Jr. *
Charlotte Estrada
A. Lynn Fee *
Ashton and Brett Finley
Jennifer and David Firestone
Chad and Melissa Fluharty
Peter Frank
Alison and Gerald Frey
Nora Futrell
Robert L. Garrison
Richard Gee
Kathy and Nickie George
Suzanne Goins
Marianne Grunske
Ashly and Jonathan Grzyb
Lawrence and Lucy Guffey
Roy and Lynda Harrill
Rowan and Ethan Hearn *
Agnes M. Heisley
Vivian and John Huguley *
Lee and Douglas Hurd *
Island Provisions
Lori and Zachary Kallick
Patricia and Tim Kellers
Jessica Klein and Lucas Schmura
Lavinia and Maximilian Klietmann
Margaret and David Kunes
Ralph Lazzara, M.D. and Rebecca
Williams Lazzara
Barbara and William Lohse
Margo Maloney
Renee, John and Lauren Manning
Marsh McLennan
Elaine Mason
Linda Mataya
Oliver Mathewes and Holly Hardy *
Lydia and Bill Matthews
Edie and David May *
Lisa McCrary

Andrea McKnight
Lynn Mcknight
Callie and Donald McLaurin
Melinda and Timothy Michael
Judy and Steve Milito *
Judith Miller
Michael Miller
Catherine and Robert Milstead
Ellen and Michael Mintz
Lani and Tom Myron
Nlets
Vickie Norris
William E. Notz, M.D. *
Lyric P. Ogden *
Cynthia Oliva and
Harrison Smith
Jenny and Simon O'Shea
Anne and Robert Ostrom
Caroline and
Kevin Pennington
Patricia and Zeke Petryszyn
Kevin Phillips
James Poulnot
Pournelle Insurance
Agency, LLC
Amanda B. Price, M.D. and
Kevin C. Price, M.D.
Kevin and Cheryl Quinn
Susan and Christopher Riley *
Ellis Ripley
River Runner Outdoor Center
Marcelle and Nick Ross
Jane and Robert Sandel,
Ed.D. *
Peggy Schachte and
Hal Currey *
Robert Schofield
Mark Shaffer and
Tamala Conner
John and Bonnie Sirianni
The Small and Greif Families *
Anne and Will Snelgrove
Ann Snipes
Steven and Susan Strohm *
Patricia Swart
Judy and Larry Tarleton *
Barbara Testor
Jim and Cynthia Thompson

Ann and James Truesdale
Gina Werner
Jollie and Wesner Families
Naideen and Killough
White III *
Beth Williams
Gina Wurst-Yeager and
John Yeager
Nicholas and Amanda Yaeger
Kim and Brett Young
Alicia Zinnecker

VOLUNTEERS

Jennifer Addison
Amanda Alig
Maycie Allers
Tamara Alquza
Heidi Anderson
Gwynedd Arbury
Bright Ariail
Alan Bagdonas
Meaghan Bailey
Elizabeth Baldwin *
Juliana Barbaccia
Karen Bartlett
James Barton-Souza
Sarah Baxter
Hudson Belcher
Jennifer Belcher
Nicholas Bellofatto
Walter Boquist
Christopher Bowen
Madison Boylan
Brianna Bradley
Courtney Brady
Ed Brault
Michael Brown
Frances Bryan *
Edison Bunch *
Sarah Busch
Katherine Byrd
Anne Camp
Florence Canaday
Claire Carlson *
Kelsea Carmichael
Olivia Carson
Alexis Cavey
Ronald Cavey

Catherine Christensen
Diane Chronis
Lisa Ciolek
Katie Clark
Marley Collett
Will Collett
Candyce Colonna
Maura Condon
Mary Corbett *
Callie Cornett
David Corvette
Christine Cotton
Eric Craig
Abigail Crawford
Jessica Cutler
Mirabelle Cutler
Marielle Debbas
Erica DeCarme
Dan Delanty
Daniel Delanty
Janis Dempsey
Matthew Dixon
Hailey Dolbow
Tracey Dreiss
Josephine Durham
Angela Dzvoniak
Barbara Eager *
Sarah Edwards
Jessie Eichman
Susan Elliott *
Keven Ellis
Jessica Ervin
Anna Ewing
Amy Ferguson *
Robert Ferguson *
Charles Fosler
Bridget Fountain
Ella Fowle
Lori Fox
Sherry Fox *
Amy Funderburk *
Nora Futrell
Annie Garzilli
Ben German
Zackery German
Dennis Gettelfinger *
Lynne Gettelfinger *
Mike Gibbons

Maureen Glass
Sarah Glover
Faythe Goins
James Goldman
Katherine Goldman
Sue Goober
Ellen Gower
Robert Graham
Peter Green
Kaitlin Gregoire
Laura Gregoire
John-Henry Gross
Braden Haggart
Kaitlyn Haggerty
Theodore Hair
Sophia Hallam
Stephanie Hansen
Robert Harris
Joyce Harrison
Amy Harrod
Nancy Heinz *
Megan Hendrick
Patricia Henley *
Mike Henry *
Betty Hill
Melissa Hiller
Linda Hollander
Emily Hoops
Jeff Hooven *
Mary Horres
Chase Howard
James Hubbell *
Rita Hueston
Yale Huett
Brent Humphrey *
Kelley Hwang *
Dorothy Ingram
Taylor Jackwood
Katherine Jahn
Michayla Jennings
Tyler Jernigan
Margie Jewell
Sophia Job
Daniel Jobe
Robert Juzups *
Halle Kasson
Kelly Keen
Aaron Kelley

Andrea Kelly
Spencer Kelly
Eric Kent *
Susan Kershaw
Claire Kirby
Parker Kirkwood
Alexander Koontz
Derek Korte
Laura Kozman
Rebecca Lane
Madeline Langer
Kaitlyn Lease
Barry LeCerf
Ashley Lench
Linda Lentz *
Adrienne Lett
Cynthia Lockhart
Matthew Long
Faith Longino
Cheryl Lontrato
Mark Lowman
Amber Lum
Melissa Lybrand
Stuart Lynch
Tita Massie *
Patricia Matysek
Don McCormack
Kathy McKee
Nathan McKeta
William McNeill
Dakota Meisenburg
Katherine Merritt
Ulrike Mersch
Shelby Meyerhoffer
Sydney Milburn
Taryn Miles
Samantha Miller
Robert Milstead
Regina Mitchell
Sarah Moffly
Taylor Molite
John Moore
Machelle Morningstar
Sylera Morrison
Abby Mulay
Tara Murtagh
Gary Neiman
Carl Nelson

Rose Noehring
 Sarah Norris
 Daniella Noy
 Isabelle Noy
 Vanessa Oltmann
 Lucia Oswald *
 Kayli Paterson
 Richard Peppler
 Ashley Peralta
 Kathryn Perry
 Keilie Perry
 Warren Petersen
 Maci Petrolle
 Kayle Pitts
 Tom Proctor
 Kenny Puckett
 Kelly Quinlan
 Ricardo Quintero
 Sarah Rabon
 Liam Radeke
 Tajay Ramos
 April Rasberry
 Madeline Revkin
 John Richardson
 Theresa Richardson
 Judy Roberts *
 Alayna Robertson
 Suzanne Rodgers *
 Susan Rohr
 Chris Rosendall
 Jim Rosenthal
 Tollison Rosol
 Linda Rowe
 Lynn Russell
 William Rutherford
 Ela Sanyal
 Kathryn Sanyal
 Aaron Saramak
 Aspen Scarberry
 Gail Schiffer
 Kiera Schneider
 Virginia Scully
 Marie Setser *
 Catherine Shapiro
 Corinne Shea
 Paul Siegel
 Kate Silvia
 Matthew Silvia

Sara Skeels
 Mara Southard
 Kirk Spletzer
 Kelly Stafford
 Marlene Stagnaro
 Louis Steinke
 Kacey Stephens
 Richard Stifel
 John Swink *
 Christopher Taylor
 Grace Taylor
 Mary Lena Taylor
 Julie Tecklenburg *
 Benjamin Thépaut
 Lauren Thomas
 Richard Thomas
 Miles Thompson
 Adam Tiberian
 Emma Tiberian
 Greg Trende
 James Trusso *
 Jacob Tucker
 Samantha Turner
 Pam Utzig *
 Kristen Van Buren
 Valerie Van Tine
 Milena Vauclair
 Isabella Verdecia
 Avery Vista
 Robin Wagner
 George Washington
 Jennifer Welch
 Mikael Wiel
 Daniel Winters
 Lori Wohlgemuth
 Madisen Workman
 Hal Wynne
 Melissa Wyzan
 Sara Zimmerman



NAUTILUS SOCIETY

Members of the Nautilus Society have pledged their support to the James L. Ferguson Permanent Endowment, ensuring the South Carolina Aquarium will be a source of magic and wonder for generations to come. We are thankful to these individuals who have included us in their estate plans.

Jim* and Esther Ferguson
 Tom Tate and Lori Fox
 Dr. and Mrs. Dennis Gettelfinger
 Karen and Jack Higgins

* Deceased

* Charter Member

BY THE NUMBERS

SUPPORTS AND REVENUE

● Admissions	\$ 7,748,001
● Contributions	\$ 4,645,266
● Memberships	\$ 1,082,866
● Concessions	\$ 768,750
● Miscellaneous	\$ 26,183
● Other Income	
PPP2	\$ 1,425,833
ERC	\$ 1,286,260
SVOG	\$ 2,926,861
● Programs and Events	
Special Events	\$ 658,111
Fundraising Events	\$ 376,798
Program Revenues	\$ 91,331
Supplemental	\$ 212,340

Total Revenue **\$21,248,600**

EXPENSES

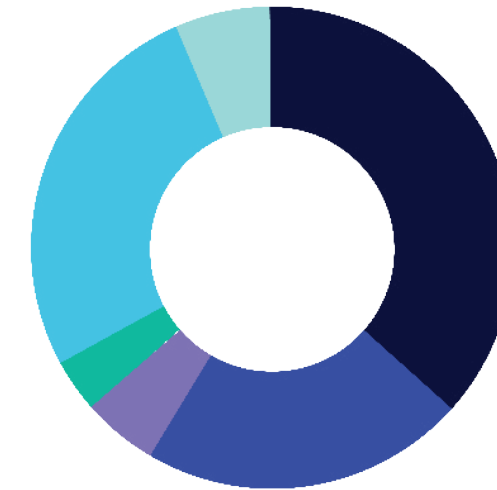
Program Services

● Facilities	\$ 2,213,019
● Guest Programs	\$ 2,109,495
● Animal Care	\$ 1,665,304
● Education	\$ 1,042,710
● Conservation	\$ 775,269
● Memberships	\$ 386,910

Supporting Services

● Management and General	\$ 1,839,124
● Annual Campaign and Fundraising	\$ 946,892
Membership Development	\$ 86,030

Total Expenses **\$ 11,064,753**



22%
of total revenue contributed by donors

42%
of total revenue earned through admissions and memberships

27%
of total revenue through federal relief funding

\$1,665,302
spent on Animal Care

74%
applied directly to education, conservation and animal care missions



2021 marked the triumphant return of Landmark 2025, our road map that charts a path to a unified and connected east peninsula waterfront and reimagines the exhibits and experiences within our walls. We are eagerly anticipating the opening of the Learning Lab in early 2024, marking the emergence of the peninsula's first dedicated interdisciplinary waterfront educational facility that will serve thousands of schoolchildren every year. As our classroom programs migrate to this revolutionary new space, a new opportunity will begin to take shape in our central facility's classroom spaces vacated by those programs. This reimagined gallery space will serve as a rotating, immersive exhibit environment, enabling us to provide regularly refreshed exhibits and experiences. On the not-so-distant horizon as well are plans for us to spearhead a revitalization of Liberty Square, in partnership with the City of Charleston and our cultural partners along the waterfront. A vision for a brilliantly animated

outdoor space that serves our community year round lies at the heart of the Liberty Square concept. In the coming year, we will connect with communities throughout our city to engage their creativity and feedback as to how this space should look and feel.

A central plank of Landmark in 2022, we will also deepen our commitment to serving teen audiences with the launch of our Teen Conservation Corps. This program will engage teens to interact with and learn directly from innovators in resilience-related fields, from conservation planning to water management. Ultimately housed within the Learning Lab, this program will activate the next generation of environmental stewards to formulate solutions to our planet's most pressing challenges.

The future is brighter than ever at the Aquarium, and on our city's vibrant east peninsula.





South Carolina Aquarium

100 Aquarium Wharf Charleston, SC 29401

Non-Profit Org.
U.S. Postage

PAID

Charleston, SC
Permit No. 236

